

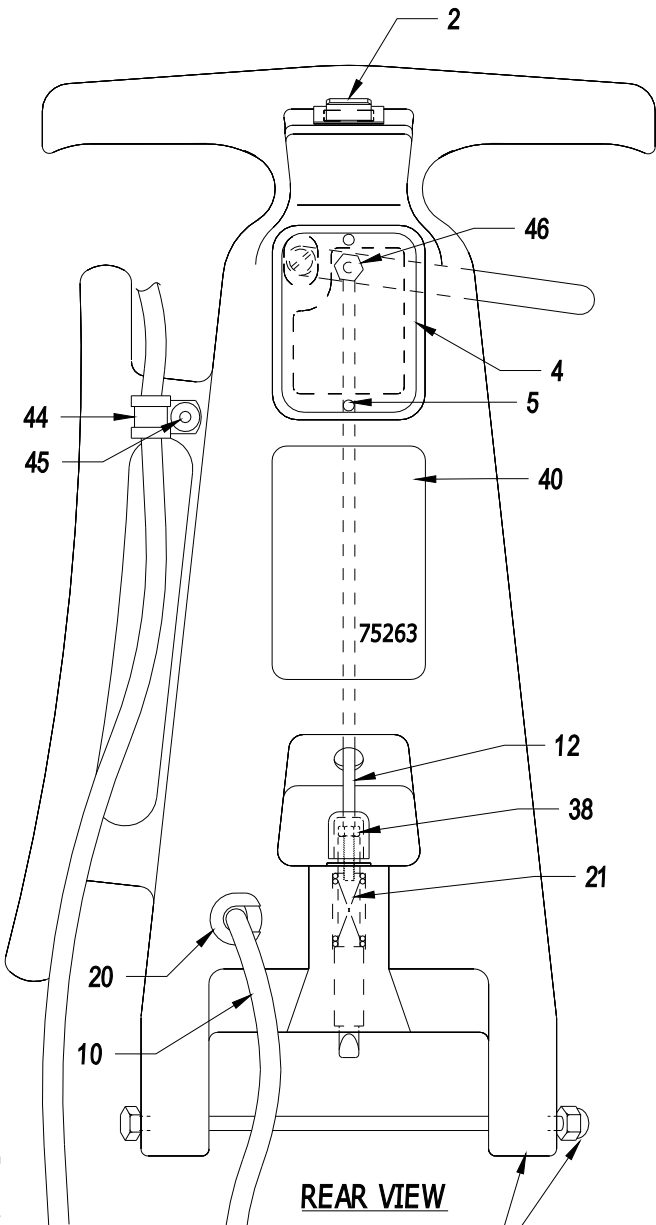


## **PARTS LIST / ILLUSTRATIONS**

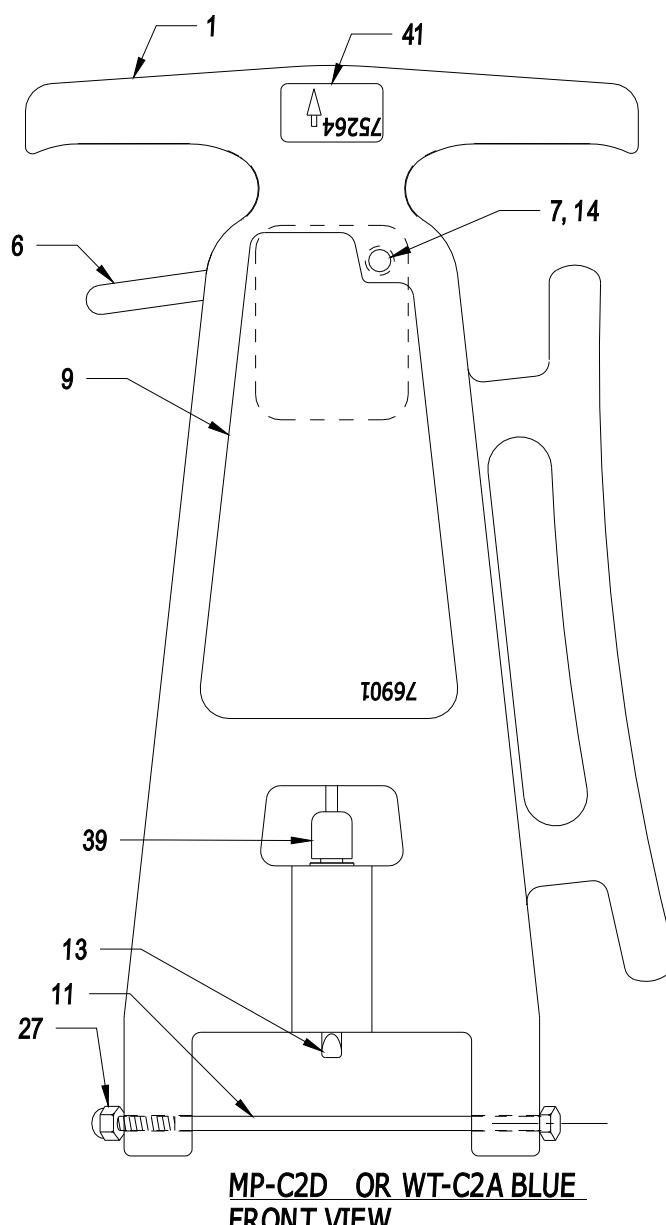
### **MIGHTY PRO AND ATTACHMENTS & ACCESSORIES**

**120V MP-C2C, ASSEMBLY # 95292**

**P/N 11640, Rev.L  
UPDATES JULY 23, 2012**

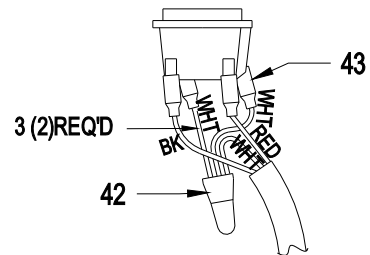


**REAR VIEW**



**MP-C2D OR WT-C2A BLUE FRONT VIEW**

**SWITCH DETAIL:**



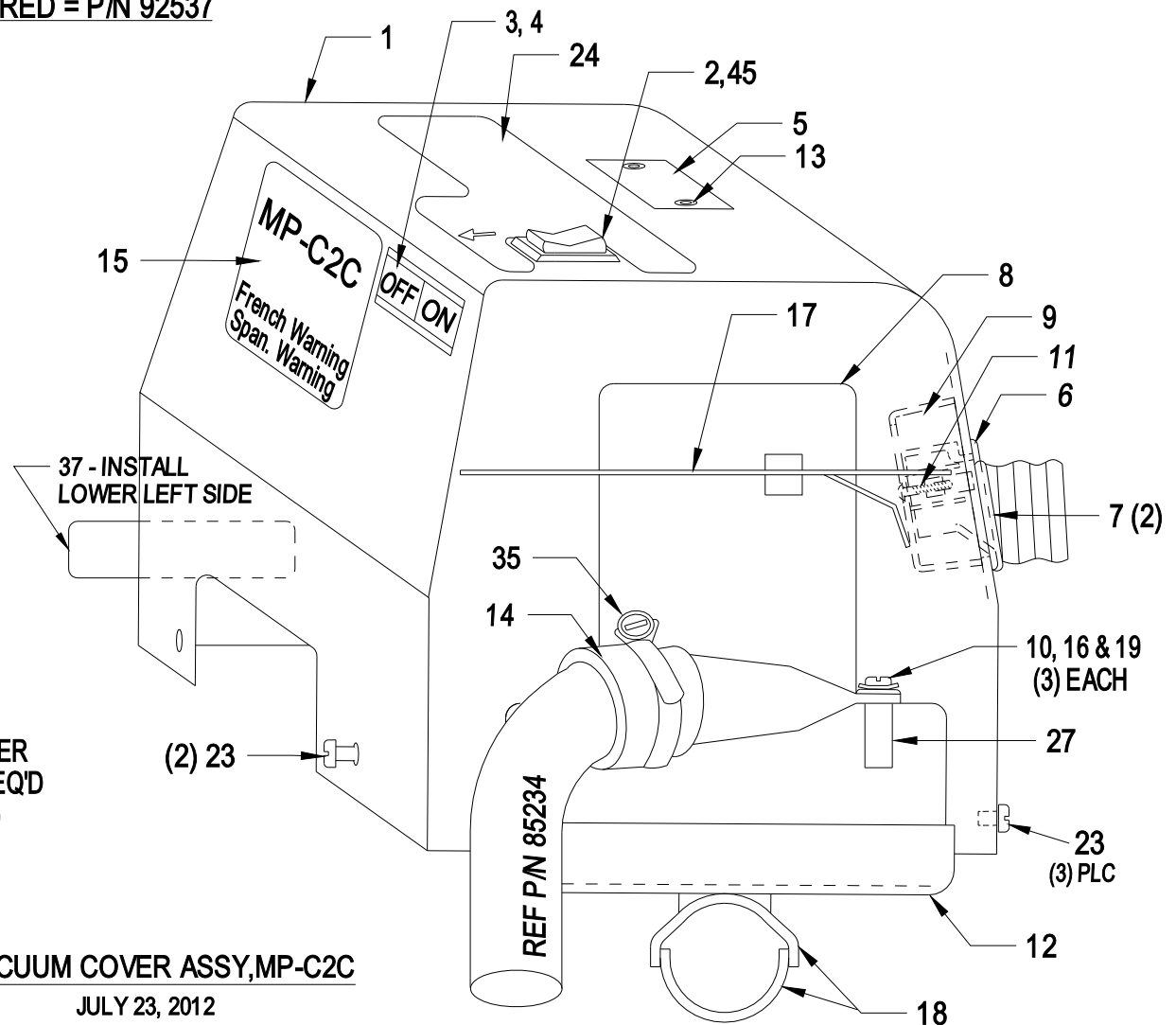
**PARTS LIST, HANDLE ASSY, 120V, P/N 92735  
MAY 9, 2011**

- 1 92827 2-PC HANDLE ASSY W/OUT CORD& SW
- 2 51060 SWITCH, PUSH BUTTON, RED
- 3 55148 WIRE, WHITE, CUT 3"L, (2) PLACES
- 4 60636 ACCESS PANEL, INJECTION MOLDED
- 5 20934 SCREW, #5 HI-LOW X 3/8"L (2)
- 6 45107 LEVER, ADJUSTMENT, W/HOLE
- 7 60181 SPACER, 1/2" BINDING POST
- 9 76901 LABEL, CARPET CLNG INSTR. BLUE (FRONT)
- 10 55393 POWER CORD, 18/3, BLACK, 36" STPD
- 11 20386 BOLT, 1/4-20 X 7.5" L (1) REQD
- 12 20369 ROD, THREADED 10-32, PLUNGER
- 13 20368 PLUNGER, THREADED, 1-END FLAT (1) REQD
- 14 20398 BINDING POST + SCREW, 1-1/2" SST
- 20 50992 BUSHING, S/R, .187 WALL, HEYCO #1250
- 21 20373 SPRING, THRD PLUNGER
- 27 20859 ACORN NUT, 1/4-20 (1) REQD
- 38 20371 NUT, HEX, 10-32 SMALL PATTERN (1)
- 39 60180 SLEEVE, BLACK VINYL BOOT
- 40 75263 DECAL, UPH CLNG INSTRUCT. (REAR SURFACE)
- 41 75264 DECAL, PRESS FOR SPRAY
- 42 51061 CONNECTOR, INSUL, CLOSED END (1)
- 43 51111 TERMINAL, FEMAL, INSUL, QK SL (Reel #51039) (4)
- 44 51055 CORD CLAMP, 5/16" W/RUBBER LINER
- 45 20911 RIVET, 3/16" BULB-TITE (1) or (20928 in Prod.)
- 46 20231 NUT, ESN 10-32 (1)

NOTE: KIT WITH COMPLETE HANDLE ASSY, NUT & BOLT = P/N 12672

**PARTS LIST, VACUUM COVER ASSEMBLY, CONSUMER BLUE,  
VACUUM COVER SUBASSY, 120V, MP-C2C, WIRED = P/N 92537**

- 1 60487 VAC COVER, MP-C2C, 120V
- 2 51107 ROCKER SWITCH, BLACK, 2HP ON-OFF-ON
- 3 51063 CIRUIT BREAKER, 13A, ROCKER STYLE
- 4 60742 CLIP, ROCKER STYLE CIR.BRKR, (2) REQ'D
- 5 41129 SERIAL NO. PLATE, MP-C
- 6 60676 POCKET PULL, FRONT
- 7 60716 GROMMET, SPLIT, BLACK, (2) REQ'D
- 8 50276 VAC MOTOR, 120V LINIX  
ORDER VAC MOTOR KIT: P/N 92727
- 9 60677 POCKET PULL, BACK
- 10 20853 WASHER, FL #10 X 5/8 O.D., (3) REQ'D
- 11 20389 SCREW, #8 X 3/4", PPH HI-LOW (2)
- 12 60635 GASKET, 7" O.D., 2" ID, 1/4" THK
- 13 20351 RIVET, AL, 1/8" DIA X 3/8" L (2) REQ'D
- 14 60726 COUPLING, THREADED WITH FLANGE (1)
- 15 76769 LABEL, MP-C2C, ETL/MODEL, 11 AMPS
- 16 19466 WASHER, LOCK, #10 EXT. STAR (3)
- 17 11848 BAFFLE, MP, UNIVERSAL VAC MOTOR
- 18 65141 GASKET, 2"W X 3 3/4"L (2) REQ'D
- 19 20952 SCREW, 10-32 X 1-3/4", (3) REQ
- 23 20375 SCREW, 10-32 X 1/2" L TRUSS HD (5) REQD
- 24 76868 LABEL, MP-C2C, OVERLAY, REAR CIR. BREAKER
- 27 60722 SPACER, 1" L FOR INSERTS HOUSINGS, (3) REQ'D
- 35 11996 CLAMP, HOSE, 35-55mm SST, ZINC SCREW (1)
- 37 76872 LABEL, MACHINE CLEANUP, ENG/SPAN
- 45 60646 INSULATOR, ON-OFF-ON ROCKER SWITCH



**VACUUM COVER ASSY, MP-C2C**

JULY 23, 2012



## RECOVERY TANK ASSY WITH DOME ASSY:

FEBRUARY 6, 2012

### PARTS LIST, RECOVERY TANK ASSY, MP-C2, 92359D

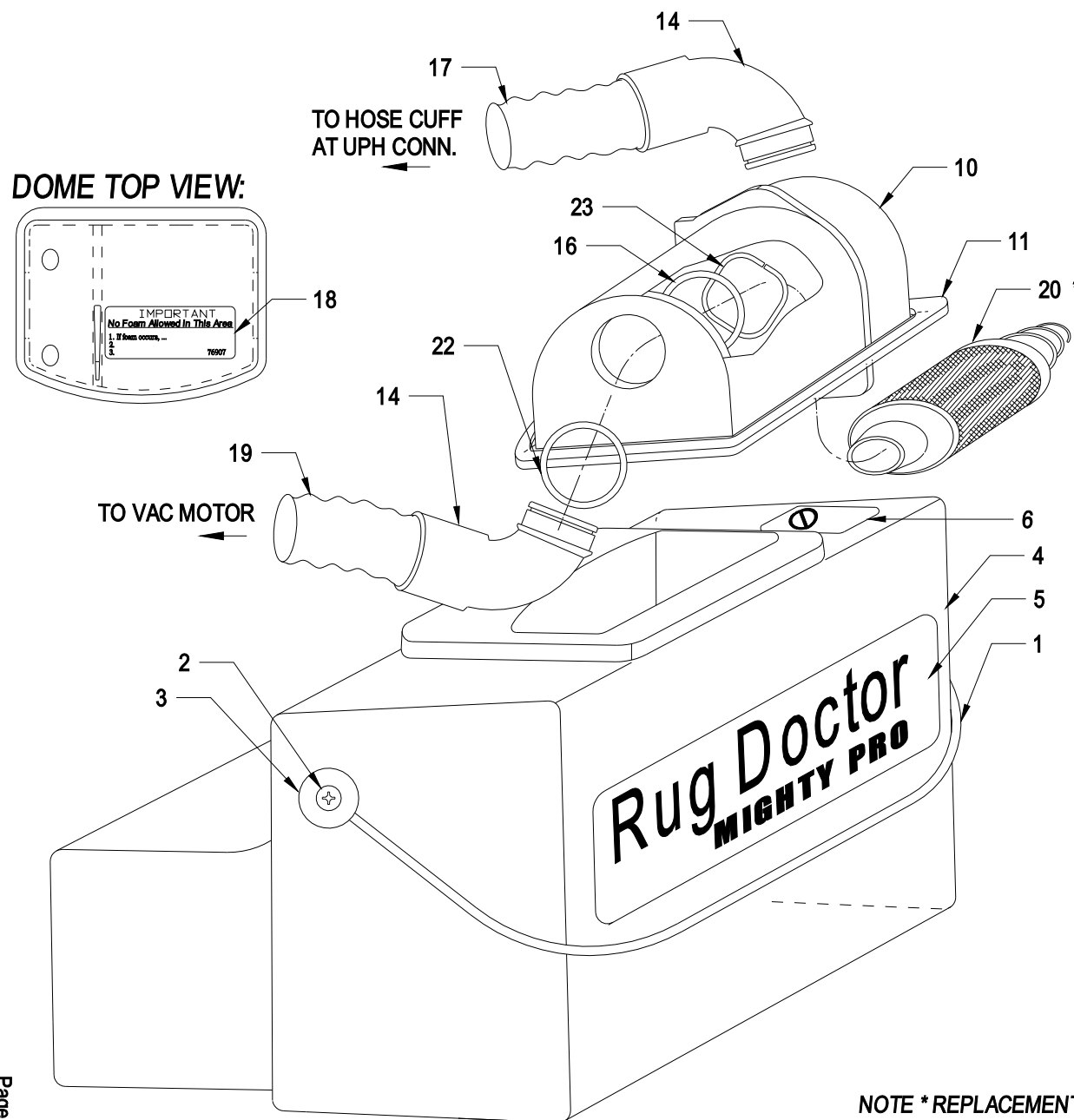
- 1 45147 BAIL, MP, 10.56"
- 2 20454 SCREW, 1/4-20 X 1.1" QTY 2
- 20237 NUT, LOCK, 1/4-20 QTY 2
- 60280 WASHER, SOCKET QTY 2
- 60279 GASKET, .25 ID QTY 2
- 3 65704 RETAINER, NYLON
- 4 92743 RECOVERY TANK ASSY WITH BAIL
- 5 76681 DECAL, "MIGHTY PRO" LOGO
- 6 76857 DECAL, UPPER TANK "DO NOT FILL" \_BLUE

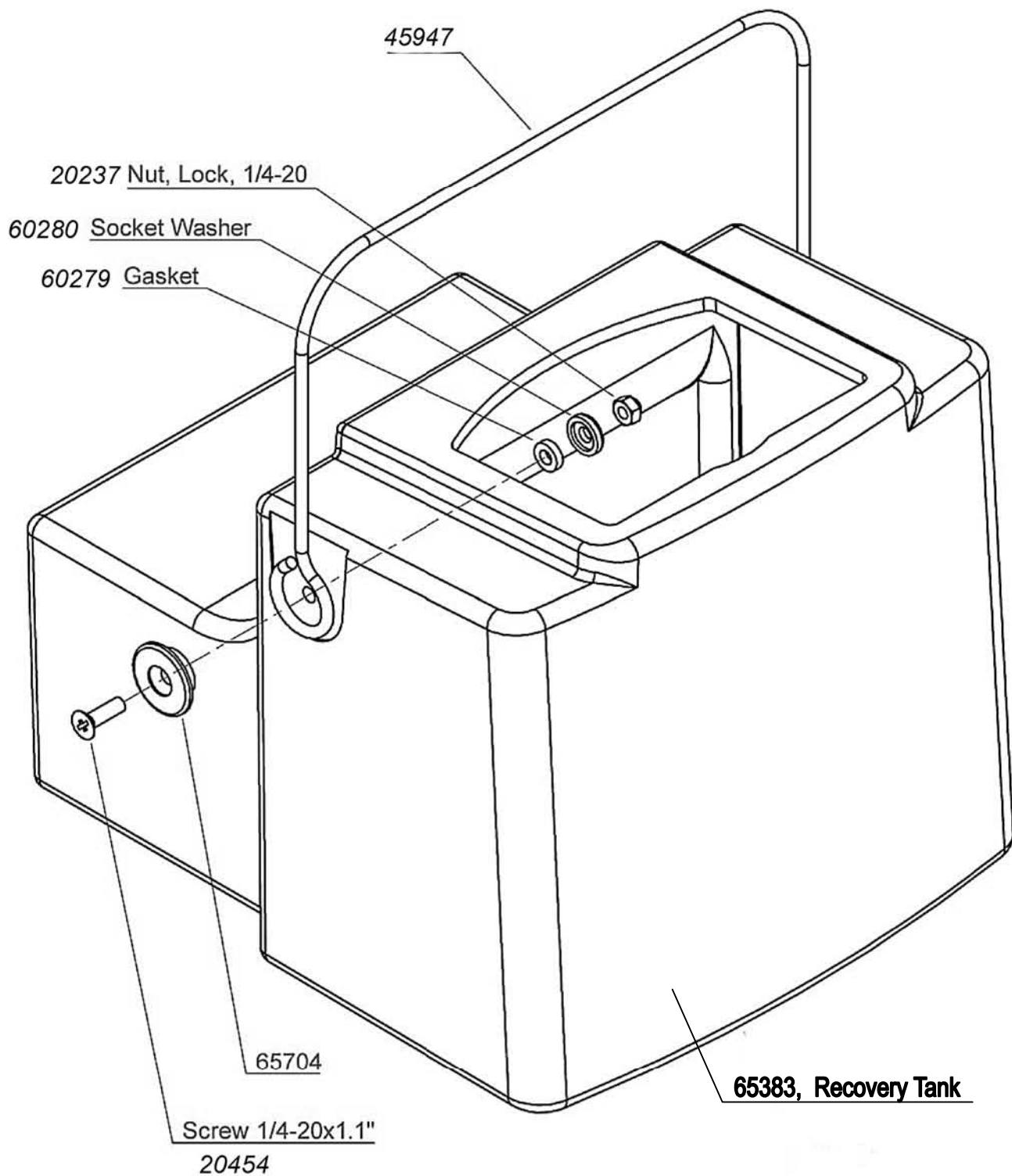
### PARTS LIST, DOME ASSY 92030

SUBASSY DOES NOT INCLUDE HOSES OR FILTER

- 10 60717 DOME, MP, CLEAR, SKIRTLESS
- 11 60701 GASKET, DOME SEATING
- 14 60760 ELBOW, 90° BLACK, WITH FLANGE (2) REQ'D
- 16 60196 WASHER, PLASTIC, BLACK, 1.56" ID, (2) REQ'D
- 17 85226 VACUUM HOSE X 20-1/2"L, Black
- 18 76907 DECAL, "IMPORTANT" NO FOAM...
- 19 85225 VACUUM HOSE X 14"L, Black
- 20 10460 FILTER, SCREEN, with SPRING
- 22 60591 GASKET, ELBOW, 2"OD 1 1/2"ID, .06 (2) REQ'D
- 23 41183 CLIP, RETAINING, SPRING, DOME (2) REQ'D

NOTE \* REPLACEMENT SPRING (ONLY) IS P/N 11840



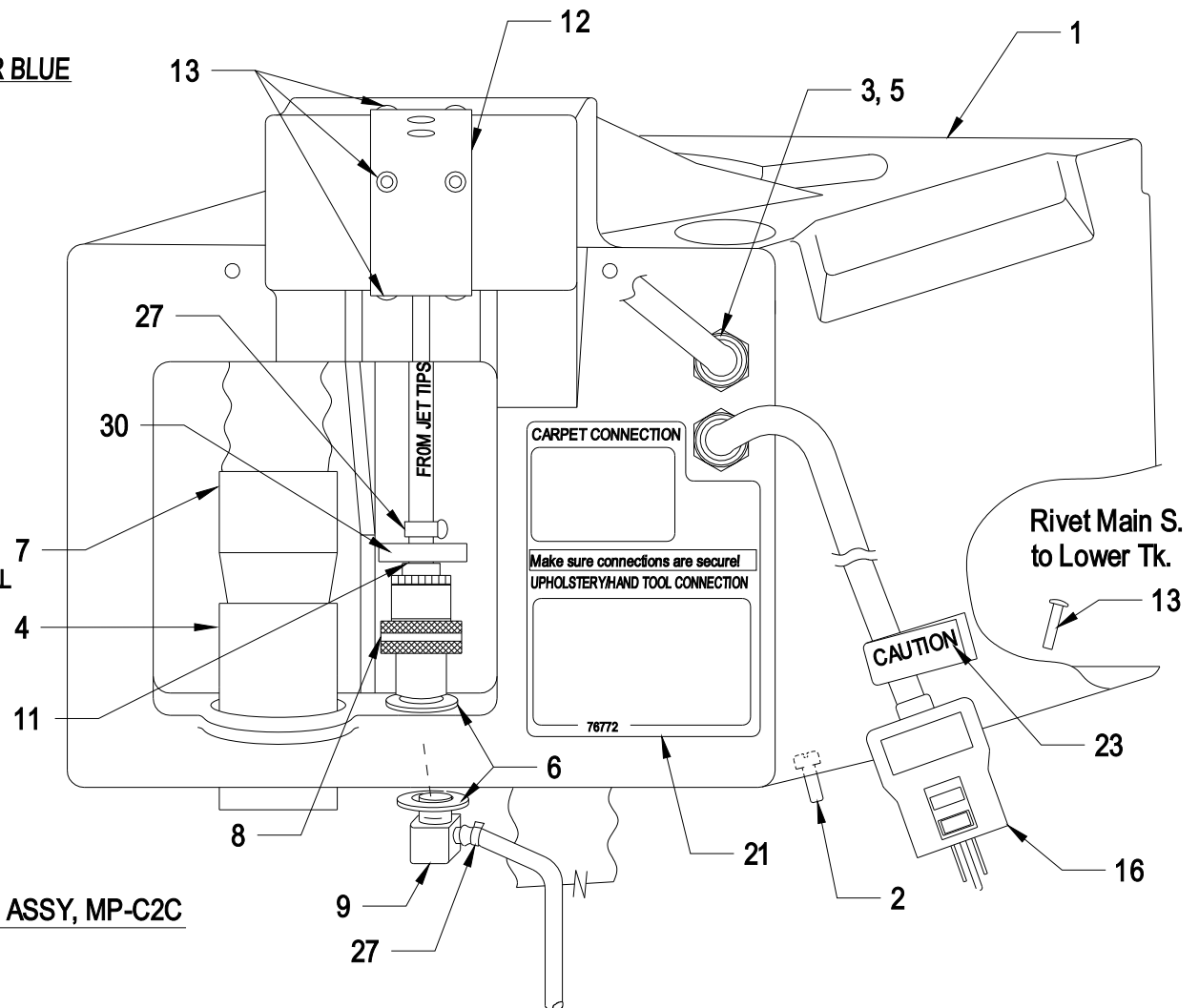


P/N 92743, RECOVERY TANK SUBASSY, MP, WITH LOCK NUT, VIPER

**7-1-09 Rev.B**

**PARTS LIST, MAIN SUPPORT ASSEMBLY, CONSUMER BLUE**

- 1 60475 MAIN SUPPORT HOUSING, BLUE
- 2 20375 SCREW,10-32 X 1/2"TRUSS-HEAD (6)REQD
- 3 51090 BUSHING,STRAIN RELIEF, (2) REQ'D
- 4 80773 HOSE END ENLARGER
- 5 51091 NUT,STRAIN RELF BUSHING (2) REQ
- 6 20907 WASHER, .562" ID, 1.00" OD, .06" T (2) REQ'D
- 7 80780 HOSE END,TAPERED
- 8 80208 QUICK COUPLER, BRASS, 4-BALL
- 9 80775 ELBOW,BRASS,1/4" HOSE
- 11 80784 NIPPLE,PLUG,QK CPLR.1/4" BARB, BRASS
- 12 45182 STRIKER PLATE, MP/WT/X3
- 13 20911 RIVET, AL 3/16"D, BULB-TITE (7)REQ'D
- 16 92585 ALCI PLUG / CORD, 120V, 28 FT
- 21 76772 LABEL, CARPET + UPH CONNS, BLUE (1)
- 23 76955 LABEL, CAUTION, PLUG, YELLOW. TRILINGUAL
- 27 11845 CLAMP, HOSE,12.8mm, (2) REQ'D
- 30 60725 WASHER, RUBBER, 1-1/4"O.D., 1/4" I.D.



**MAIN SUPPORT HOUSING ASSY, MP-C2C**

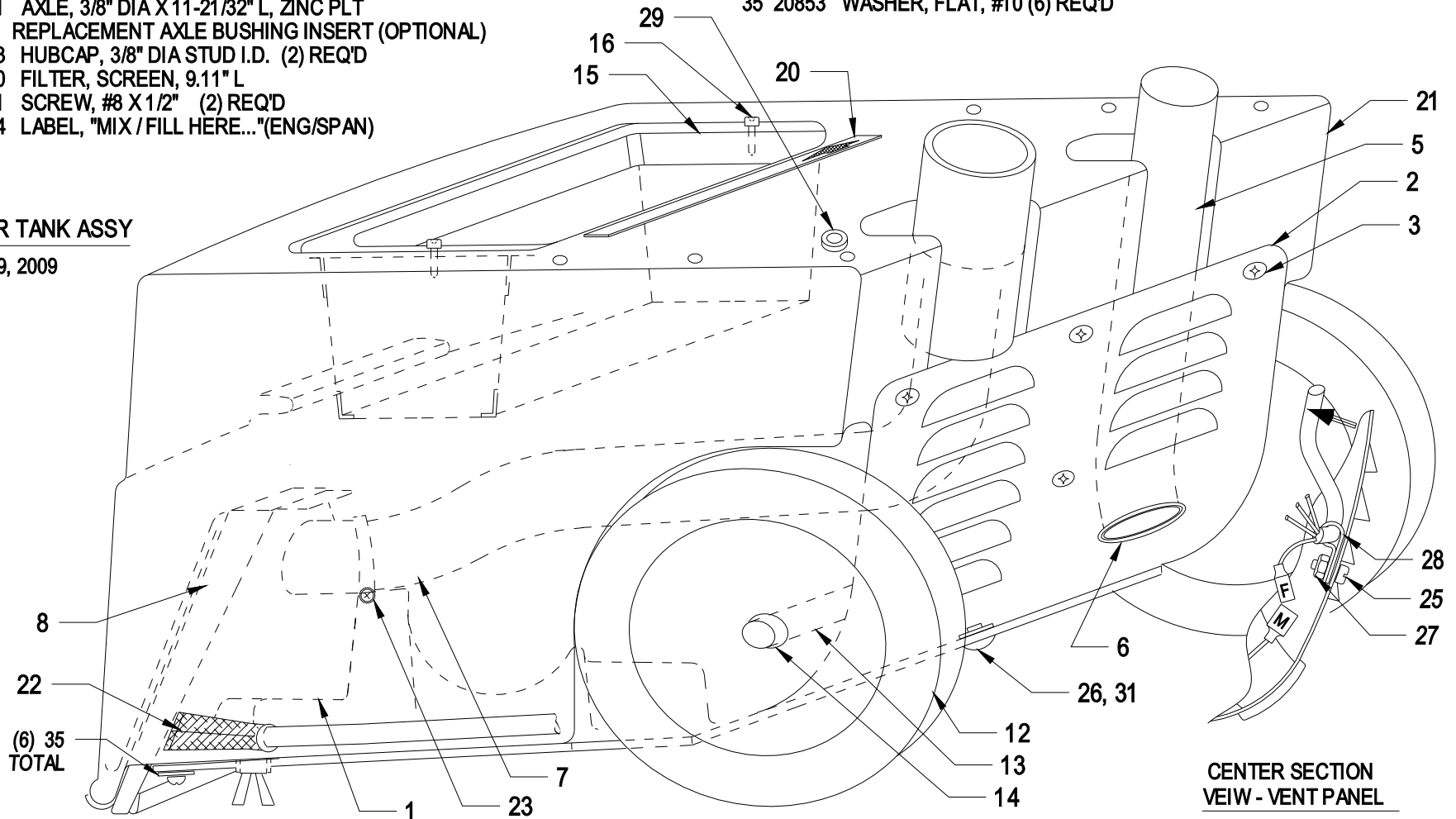
JULY 13, 2011

**PARTS LIST, LOWER TANK ASSY, MP, 120V, BLUE #300**  
**LOWER TANK W/OUT FILL BASKET SUBASSY = P/N 92646**

- |    |         |   |    |       |                                      |
|----|---------|---|----|-------|--------------------------------------|
| 1  | 92614   | BOTTOM PAN SUBASSY WITH PLASTIC VENT, WIRED (REF) | 21 | 60477 | TANK HOUSING, LOWER,MP-C BLUE        |
| 2  | 60494   | VENT PANEL, BLACK PLASTIC                         | 22 | 10461 | LINE STRAINER, SUMP FILTER, 2-1/2"L  |
| 3  | 20375   | SCREW, 10-32 X 1/2" TRUSS-HD (3)REQ'D             | 23 | 11995 | CLAMP, HOSE, 25-40mm SST, ZINC SCREW |
| 5  | 85234   | VAC HOSE, EXHAUST, 22"L                           | 25 | 20510 | SCREW, 8-32 X 5/8" PAN-HD (1) REQD   |
| 6  | 60716   | GROMMET, SPLIT, BLACK                             | 26 | 20911 | RIVET, ALUM,.188" DIA, BULB-TITE (1) |
| 7  | 85227   | VAC HOSE, 17"LONG (NOZZLE TUBE)                   | 27 | 20241 | ESN, 8-32 (1) REQ'D                  |
| 8  | 45160   | NOZZLE, FLOOR, WITH ROLLED LIP                    | 28 | 51055 | CLAMP, HOSE, 5/16" METAL W/RBR LINER |
| 12 | 10281   | WHEEL/TIRE, 6 1/2"DIA, SMOOTH HUB (2)REQ'D        | 29 | 60634 | GASKET, NEO RUBBER, .406"ID, 1" OD   |
| 13 | 45121   | AXLE, 3/8" DIA X 11-21/32" L, ZINC PLT            | 31 | 20266 | WASHER, AL, .200 ID,.44 OD, .06 THK  |
|    | - 11270 | REPLACEMENT AXLE BUSHING INSERT (OPTIONAL)        | 35 | 20853 | WASHER, FLAT, #10 (6) REQ'D          |
| 14 | 11183   | HUBCAP, 3/8" DIA STUD I.D. (2) REQ'D              |    |       |                                      |
| 15 | 60400   | FILTER, SCREEN, 9.11" L                           |    |       |                                      |
| 16 | 20091   | SCREW, #8 X 1/2" (2) REQ'D                        |    |       |                                      |
| 20 | 76984   | LABEL, "MIX / FILL HERE..."(ENG/SPAN)             |    |       |                                      |

**LOWER TANK ASSY**

OCT. 19, 2009



(6) 35  
TOTAL

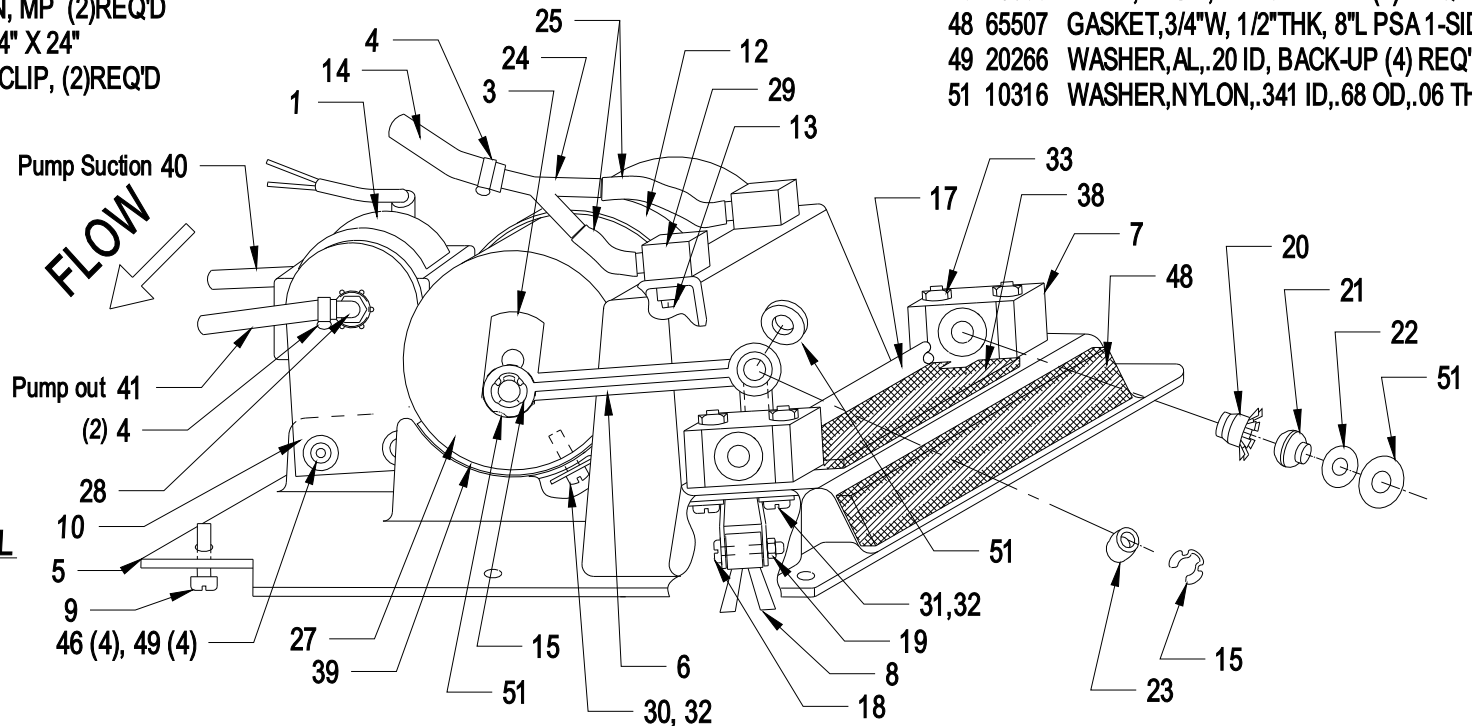
**CENTER SECTION  
VIEW - VENT PANEL**



**PARTS LIST, BOTTOM PAN ASSEMBLY,120V, MP-C2D:  
BOTTOM PAN /PLASTIC VENT PANEL SUB, WIRED (GOTEC PUMP)**

JULY 23, 2012

- |    |       |   |                                  |       |                                   |    |       |   |
|----|-------|---|----------------------------------|-------|-----------------------------------|----|-------|---|
| 1  | 12139 | PUMP KIT GOTEC: Check availability<br>with Customer Service | 17                               | 45149 | BRUSH HOLDER ASSY, 7.46"L         | 28 | 60611 | ELBOW / BARB, 1/4", (2) REQ'D           |
| 3  | 90069 | CAM ASSEMBLY  | 18                               | 20521 | SCREW,8-32 X 1"HEX WSHR-HD (2)    | 29 | 60139 | FITTING,BARBED,90°, (2)REQ'D            |
| 4  | 11845 | CLAMP, HOSE, OETIKER 12.8-706R (3)                          | 19                               | 20241 | ESN, 8-32, (2) REQ'D              | 30 | 20906 | SCREW,10-32 X 5/8" WHRHD, (2)REQ'D      |
| 5  | 60435 | BOTTOM PAN, BLACK   | 20                               | 80597 | SLEEVE HOLDER, BEARING,PB(2)      | 31 | 20390 | SCREW,10-32 X 1 1/4" HEX HEAD (4)REQ'D  |
| 6  | 40352 | DRIVE ARM, SELF ALIGNING                                    | 21                               | 10341 | BEARING, PILLOW BLOCK (2) REQ'D   | 32 | 20853 | WASHER,FL #10 X 5/8"OD (6)REQ'D         |
| 7  | 40353 | PILLOW BLOCK, (2)REQ'D                                      | 22                               | 20840 | WASHER,FELT, 5/8"OD, 23/64"ID (2) | 33 | 20231 | NUT, NYLOCK 10-32, (4) REQ'D            |
| 8  | 60719 | BRUSH STRIP, 9.18" L  | 23                               | 80596 | BUSHING, DRIVE-ARM, (2) REQ'D     | 38 | 60599 | SEALING GASKET,BRSH-BKT CUTOUT          |
| 9  | 20375 | SCREW,10-32 X 1/2"TRUSS-HEAD (6)                            | 24                               | 60138 | CONNECTOR, "Y"                    | 39 | 60598 | GASKET,MOTOR 3/16"THICK RUBBER,4"X3"    |
| 10 | 60720 | PUMP MOUNT,3/16" RUBBER, (2)                                | 25                               | 85231 | HOSE,REINF,1/4"ID, 3"L (2)REQ'D   | 40 | 85237 | SOL.HOSE,REIN 1/4" X 29"L               |
| 12 | 60166 | TIE, BLACK, 14" L, PLASTIC STRAP, MOTOR                     | 27                               | 50267 | MOTOR,BRUSH DRIVE,120V LINIX      | 41 | 85198 | SOL.HOSE,REINF 1/4" X 12"L              |
| 13 | 80881 | TIP, JET, 110° NYLON, MP (2)REQ'D                           | ORDER DRIVE MOTOR KIT: P/N 92979 |       |                                   | 46 | 20388 | RIVET, ALUM, LARGE HEAD (4) REQ'D       |
| 14 | 85230 | SOL.HOSE, REINF 1/4" X 24"                                  |                                  |       |                                   | 48 | 65507 | GASKET,3/4"W, 1/2"THK, 8"L PSA 1-SIDE   |
| 15 | 20604 | RETAINING RING, C-CLIP, (2)REQ'D                            |                                  |       |                                   | 49 | 20266 | WASHER,AL,.20 ID, BACK-UP (4) REQ'D     |
|    |       |   |                                  |       |                                   | 51 | 10316 | WASHER,NYLON,.341 ID,.68 OD,.06 THK (4) |



**SEE BOTTOM PAN DETAIL  
WIRED (NEXT SHEET)**

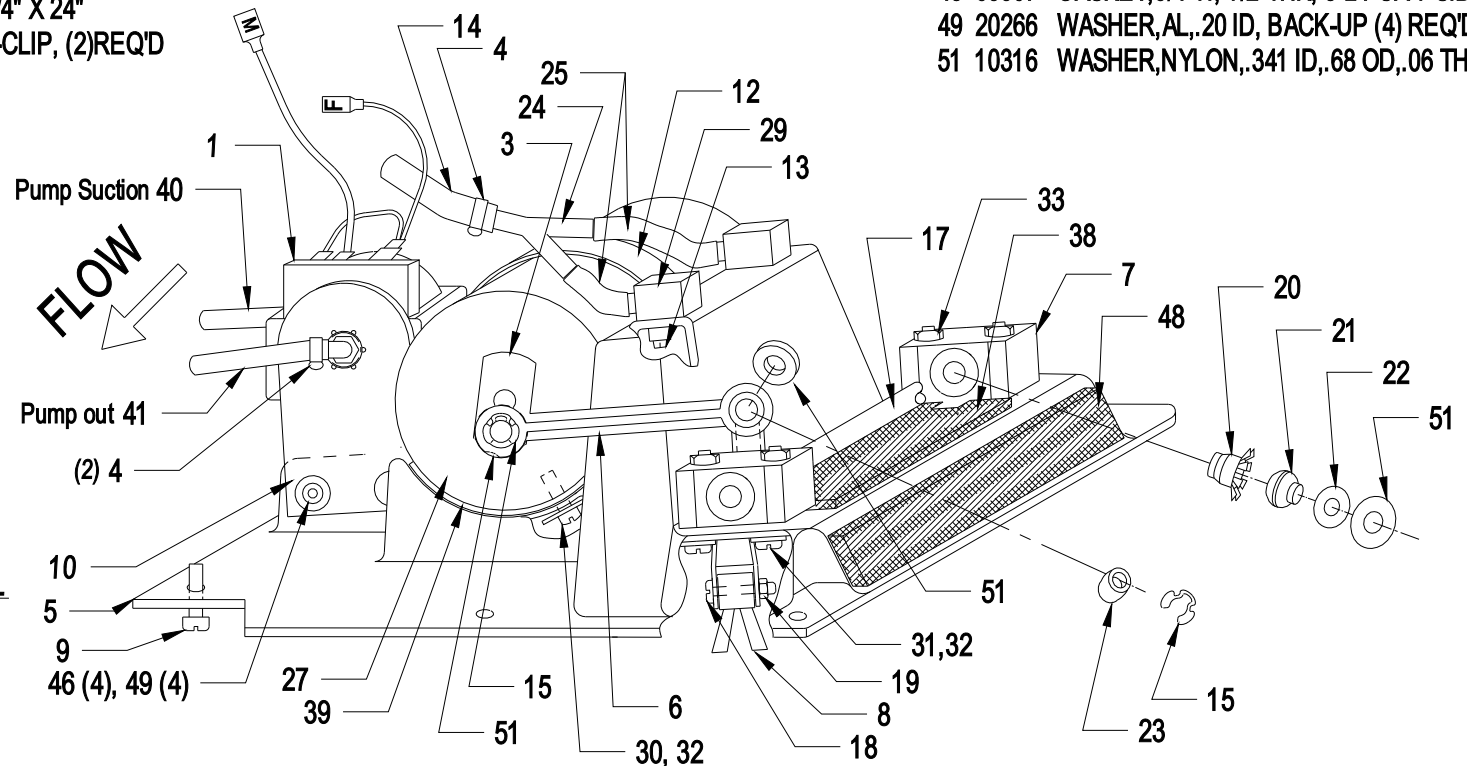
**SEE ALTERNATE PAGE FOR NEW JLT PUMP CONFIGURATION**

**PARTS LIST, BOTTOM PAN ASSEMBLY,120V, MP-C2D:**

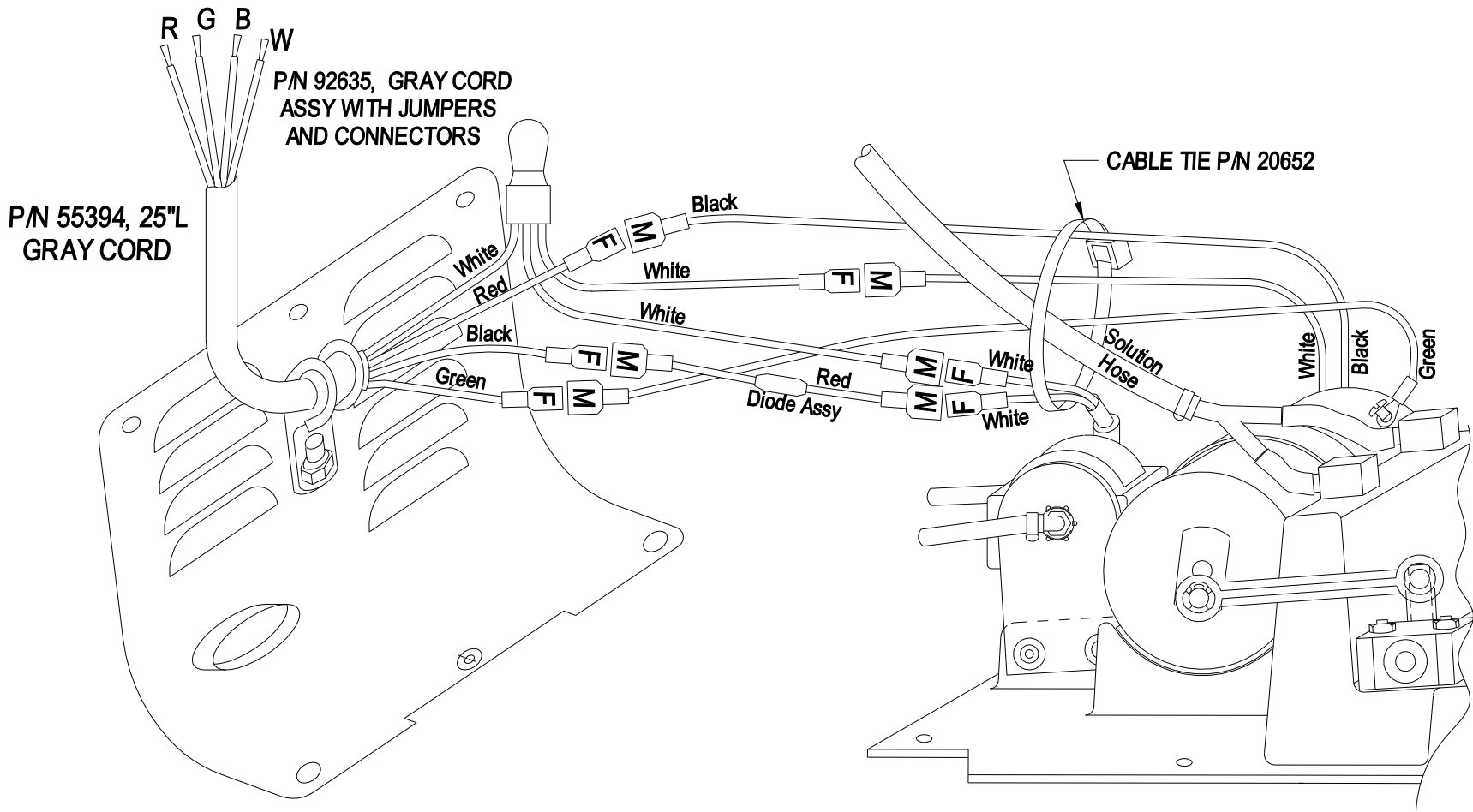
**BOTTOM PAN / PLASTIC VENT PANEL SUB, WIRED = P/N 92614 (JLT PUMP)**

**JULY 23, 2012**

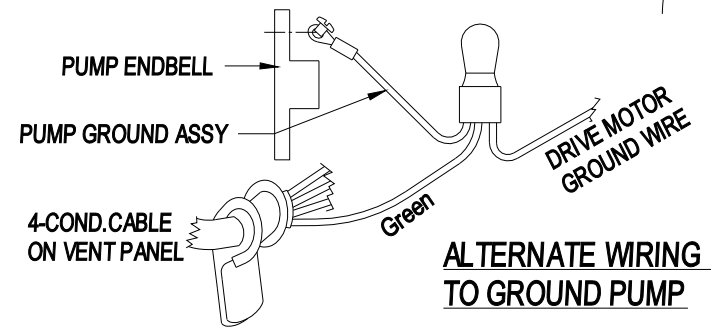
- |  |  |  |
|--|--|--|
| 1 12158 PUMP KIT 120V WITH INSTRUCTIONS, JLT     | 17 45149 BRUSH HOLDER ASSY, 7.46"L         | 29 60139 FITTING,BARBED,90°, (2)REQ'D            |
| 3 90069 CAM ASSEMBLY                             | 18 20521 SCREW,8-32 X 1"HEX WSHR-HD (2)    | 30 20906 SCREW,10-32 X 5/8" WHRHD, (2)REQ'D      |
| 4 11845 CLAMP, HOSE, OETIKER 12.8-706R (3)       | 19 20241 ESN, 8-32, (2) REQ'D              | 31 20390 SCREW,10-32 X 1 1/4" HEX HEAD (4)REQ'D  |
| 5 60435 BOTTOM PAN, BLACK                        | 20 80597 SLEEVE HOLDER, BEARING,PB(2)      | 32 20853 WASHER,FL #10 X 5/8"OD (6)REQ'D         |
| 6 40352 DRIVE ARM, SELF ALIGNING                 | 21 10341 BEARING, PILLOW BLOCK (2) REQ'D   | 33 20231 NUT, NYLOCK 10-32, (4) REQ'D            |
| 7 40353 PILLOW BLOCK, (2)REQ'D                   | 22 20840 WASHER,FELT, 5/8"OD, 23/64"ID (2) | 38 60599 SEALING GASKET,BRSH-BKT CUTOUT          |
| 8 60719 BRUSH STRIP, 9.18" L                     | 23 80596 BUSHING, DRIVE-ARM, (2) REQ'D     | 39 60598 GASKET,MOTOR 3/16"THICK RUBBER,4"X3"    |
| 9 20375 SCREW,10-32 X 1/2"TRUSS-HEAD (6)         | 24 60138 CONNECTOR, "Y"                    | 40 85237 SOL.HOSE,REIN 1/4" X 29"L               |
| 10 60720 PUMP MOUNT,3/16" RUBBER, (2)            | 25 85231 HOSE,REINF,1/4"ID, 3"L (2)REQ'D   | 41 85198 SOL.HOSE,REINF 1/4" X 12"L              |
| 12 60166 TIE, BLACK, 14" L, PLASTIC STRAP, MOTOR | 27 50267 MOTOR,BRUSH DRIVE,120V LINIX      | 46 20388 RIVET, ALUM, LARGE HEAD (4) REQ'D       |
| 13 80881 TIP, JET, 110° NYLON, MP (2)REQ'D       | ORDER DRIVE MOTOR KIT: P/N 92979           | 48 65507 GASKET,3/4"W, 1/2"THK, 8"L PSA 1-SIDE   |
| 14 85230 SOL.HOSE, REINF 1/4" X 24"              |  | 49 20266 WASHER,AL.,20 ID, BACK-UP (4) REQ'D     |
| 15 20604 RETAINING RING, C-CLIP, (2)REQ'D        |  | 51 10316 WASHER,NYLON,.341 ID,.68 OD,.06 THK (4) |



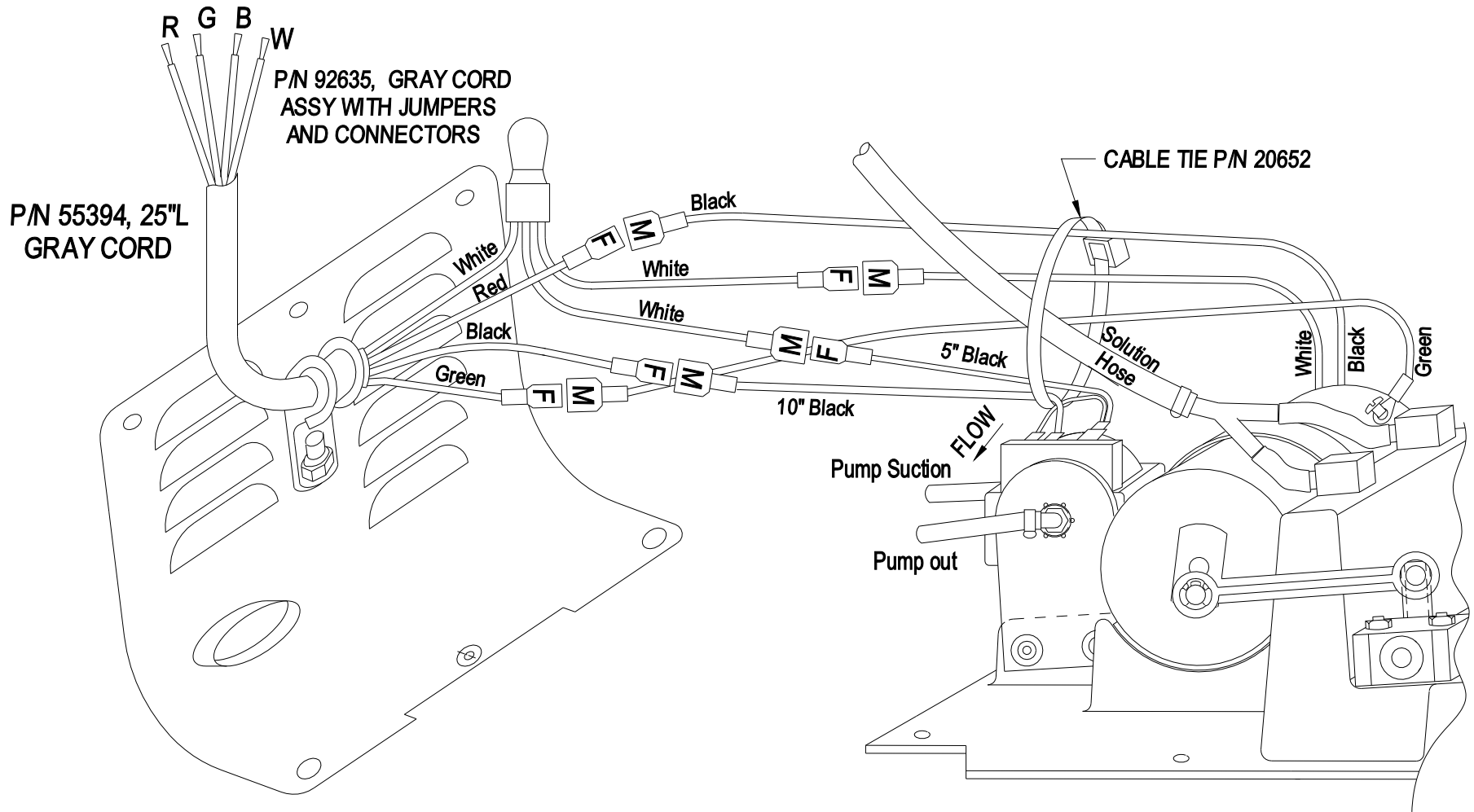
**SEE BOTTOM PAN DETAIL  
WIRED (NEXT SHEET)**



**SIDE VIEW  
VENT PANEL W/ BOTTM PAN 120V  
JULY 17, 2009**



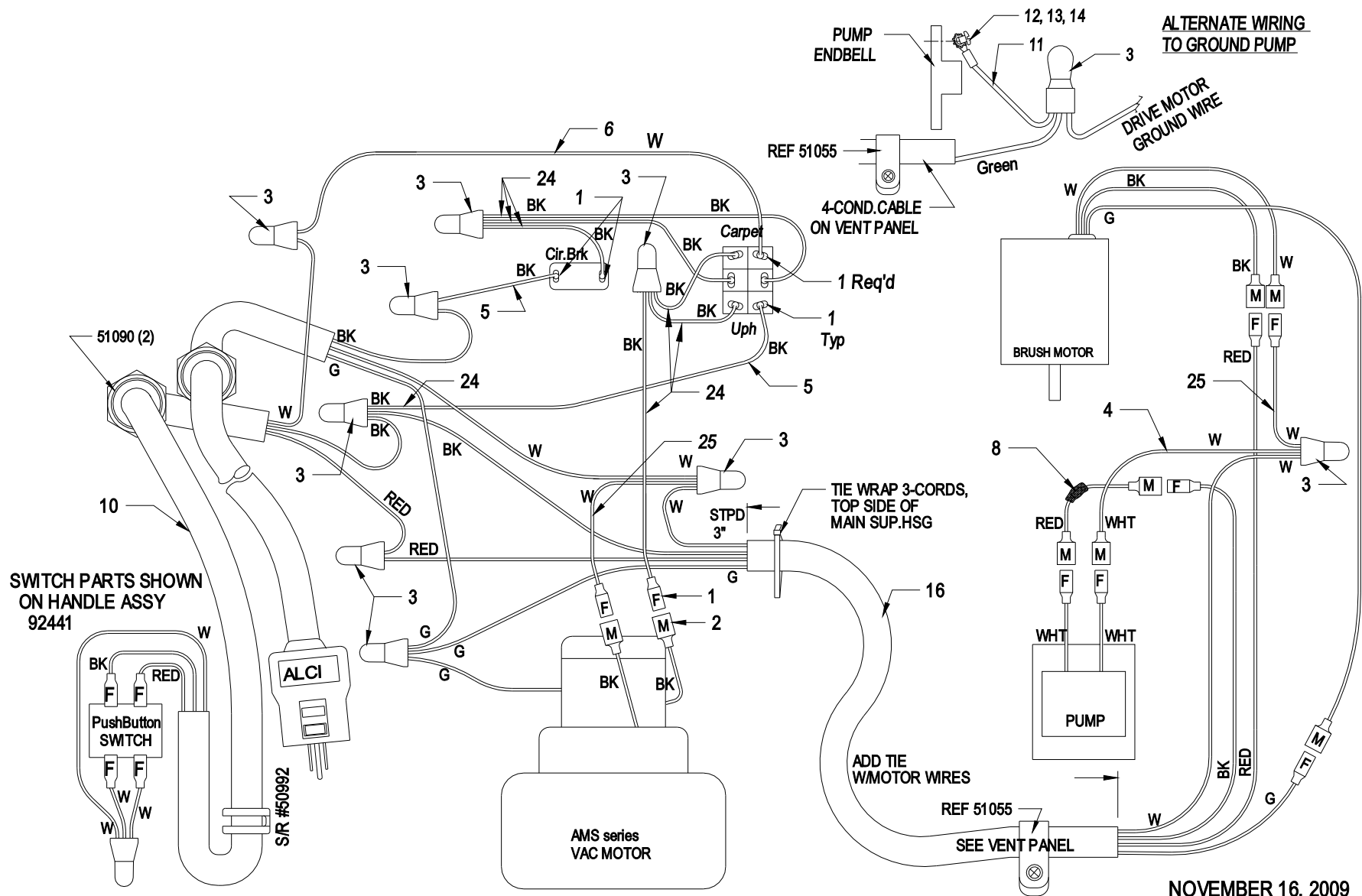
**ALTERNATE WIRING  
TO GROUND PUMP**



**SIDE VIEW**

**VENT PANEL W/ BOTTM PAN 120V: JLT REPLACEMENT PUMP**

Pump has two black wires. June 5, 2012

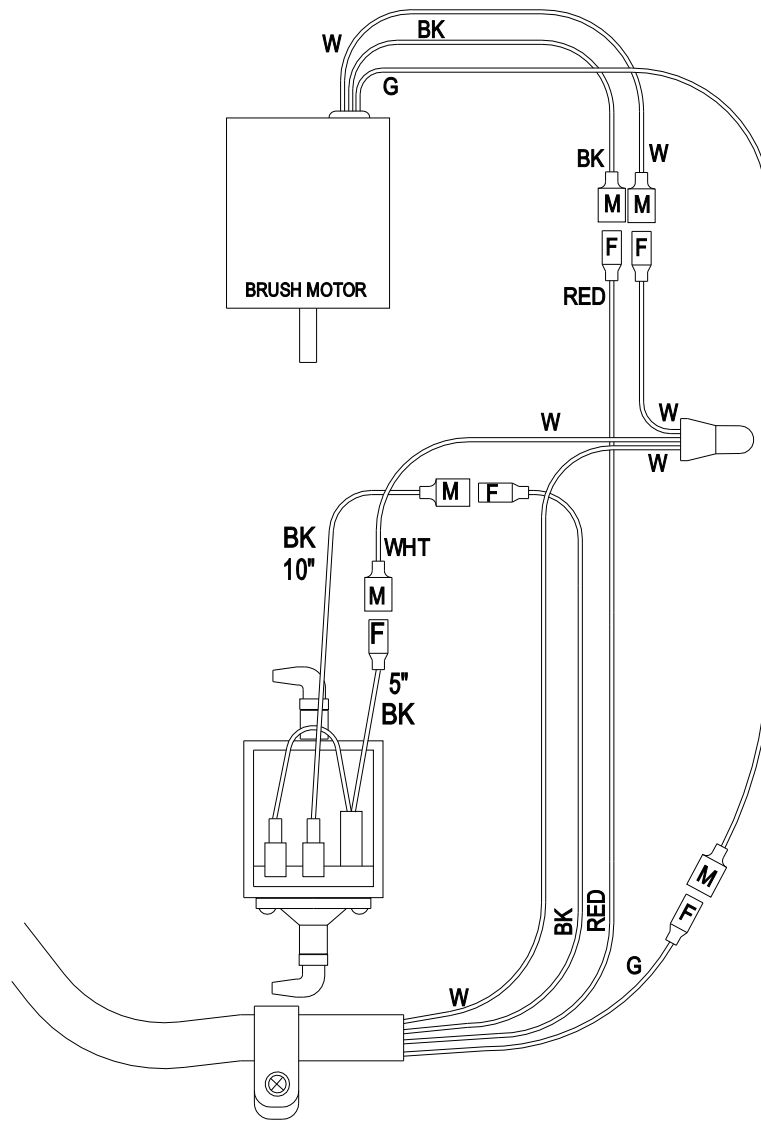


**PARTS LIST: WIRING 120V, Mighty Pro with plastic vent panel**

- 1 51111 FEMALE INSUL QK SL TERM, (Reel #51039) (18) REQ'D
- 2 51110 MALE INSUL QK SL TERM, (Reel #51040) (6) REQ'D
- 3 51061 INSUL CONN., CLOSED END (9) REQ'D
- 4 55148 WIRE, 18 AWG, WHITE, (CUT 10"L), (1) PLACE
- 5 55147 WIRE, 18 AWG, BLACK, (CUT 17"L), (2) PLACES

- 6 55148 WIRE, 18 AWG, WHITE, (CUT 17"L), (1)
- 8 50258 DIODE ASSY, 120V
- 9 20652 CABLE TIE (2)
- 10 55393 CORD, 18/3, RED/BLK/WHT 36"
- 11 92015 WIRE ASSY W/RING TERM, PUMP
- 12 20394 SCREW, M4 X 12mm

- 13 20395 WASHER, LOCK, EXT.STAR, M4
- 14 20396 WASHER, FLAT, M4
- 16 55394 CORD, 4-CONDUCTOR, Gray, 25" LONG, STRIPPED
- 24 55147 WIRE, BLACK, 18AWG, (CUT 5" L), (6) PLACES
- 25 55148 WIRE, WHITE, 18AWG, (CUT 5" L), (2) PLACES



**JLT PUMP CONFIGURATION: MP**  
**Two Black Wires on pump**  
**JUNE 5, 2012**