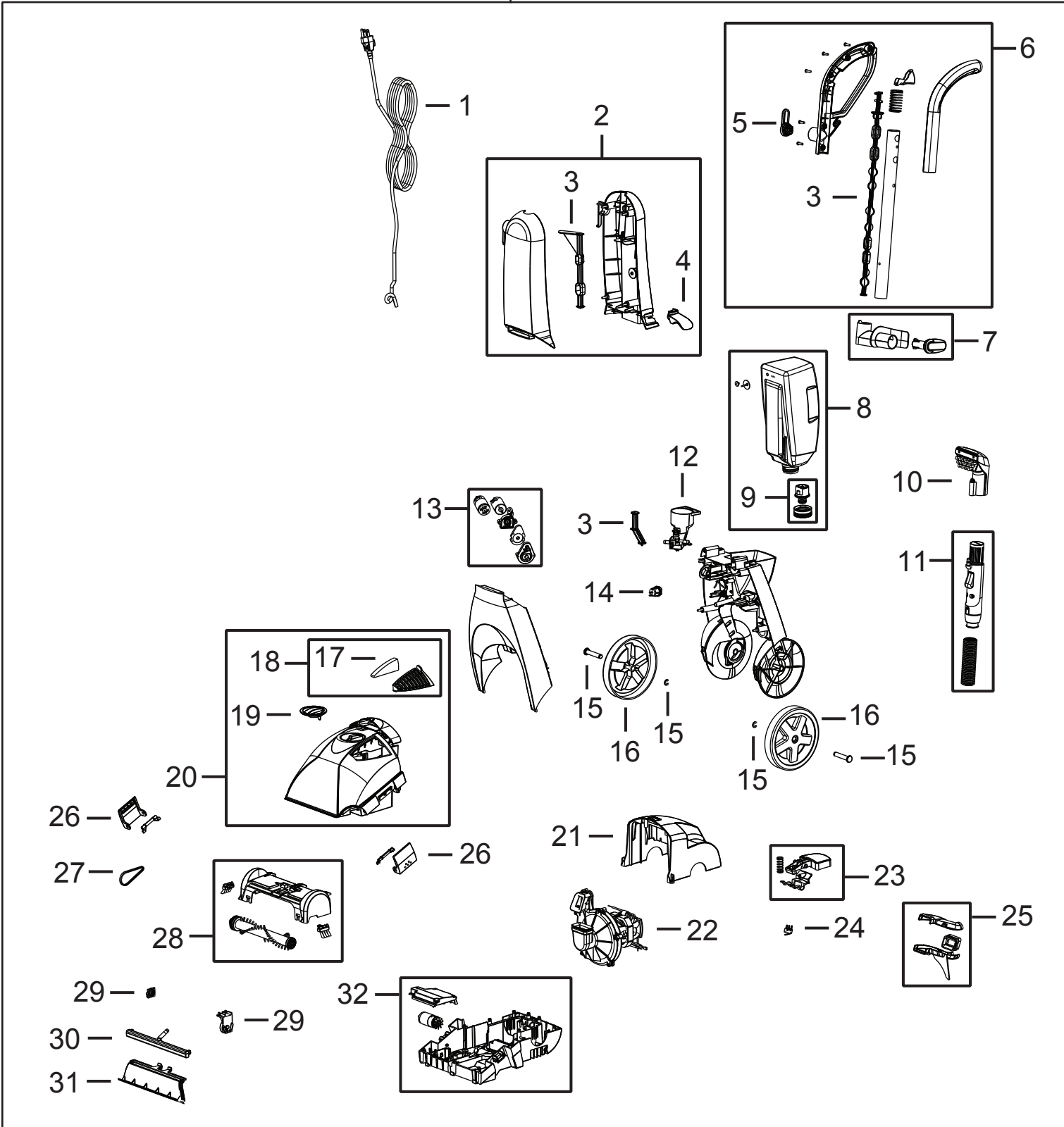




ReadyClean PowerBrush Plus

16W5



Bissell Homecare, Inc. (U.S.)
 Phone: 1-800-457-1509
 Fax: 1-800-517-9535
 partner.bissell.com

Bissell Canada
 Phone: 1-800-374-3196
 Fax: 1-800-517-9535
 Email: schematics@bissell.com

Issued: August 2011
 Revised:
 © 2011 BISSELL Homecare, Inc.

Lightweight Deep Cleaner

ReadyClean® Plus Series 16W5



KEY	PART NO	DESCRIPTION
1	2035672	Cord
2	2035663	Upper Body - Licorice Red
3	2035664	Push Rod Kit (upper, middle & lower push rods) - 16W5
4	2035659	Lower Hose Wrap
5	2035660	Cord Wrap
6	2035657	Handle Assembly w/ Screws - Licorice Red
7	2035658	Upper Hose Wrap / Clip
8	2035661	Clean Tank w/Cap
9	2035541	Cap & Insert Assy
10	2036653	4" Upholstery Tool
11	2035666	Hose Assembly
12	2035665	Receiver Assy
13	2035667	Pump Assembly (Includes Motor)
14	2035671	Power Switch
15	2035566	Wheel Axle Kit (2 axles, 2 e-rings)
16	2035565	Wheel (2pk)
17	2035676	Foam Filter
18	2035675	Foam Filter Grille w/ Filter
19	2035674	Diverter Knob
20	2035673	Recovery Tank w/ Diverter - 16W5
21	2035669	Rear Cover w/ Screw
22	2035618	Motor - Powerbrush Units
23	2035668	Detent Lever Assy (pedal, pin & spring)
24	2035670	Miroswitch
25	2035678	Foot Duct for Hose (w/ screws)
26	2035677	Latches - Recovery Tank (2pk)
27	2035549	Belt
28	2035680	Brush Roll Chamber (w/ nozzle latch, screws, edge brushes)
29	2035550	Swivel Arm Kit
30	2035682	Spray Bar - 16W5
31	2035679	Nozzle
32	2035681	Base w/ Brush Motor
xx	2035683	Bare Floor Tool
xx	2035684	Screw Kit
xx		User's Guide

BISSELL Homecare, Inc. (U.S.)

Phone: 1-800-457-1509

Fax: 1-800-517-9535

partner.bissell.com

Bissell Canada

Phone: 1-800-374-3196

Fax: 1-800-517-9535

Schematics@bissell.com

Issued: November 2011

Revised:

© 2011 BISSELL Homecare Inc.