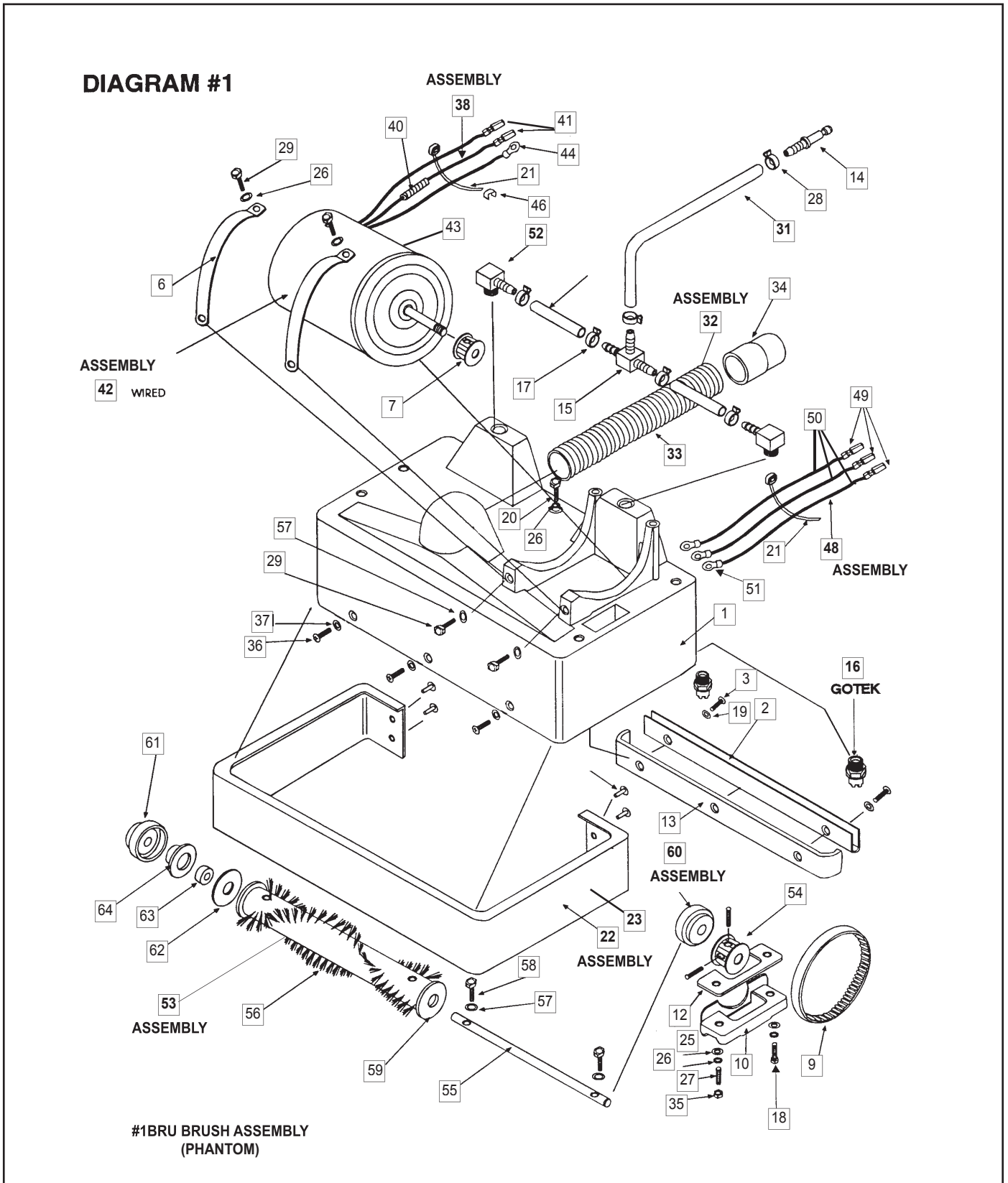


Carpet Express C-4

DIAGRAMS AND PARTS LIST



Model C4 - Diagram #1





Model C4 - Diagram #1

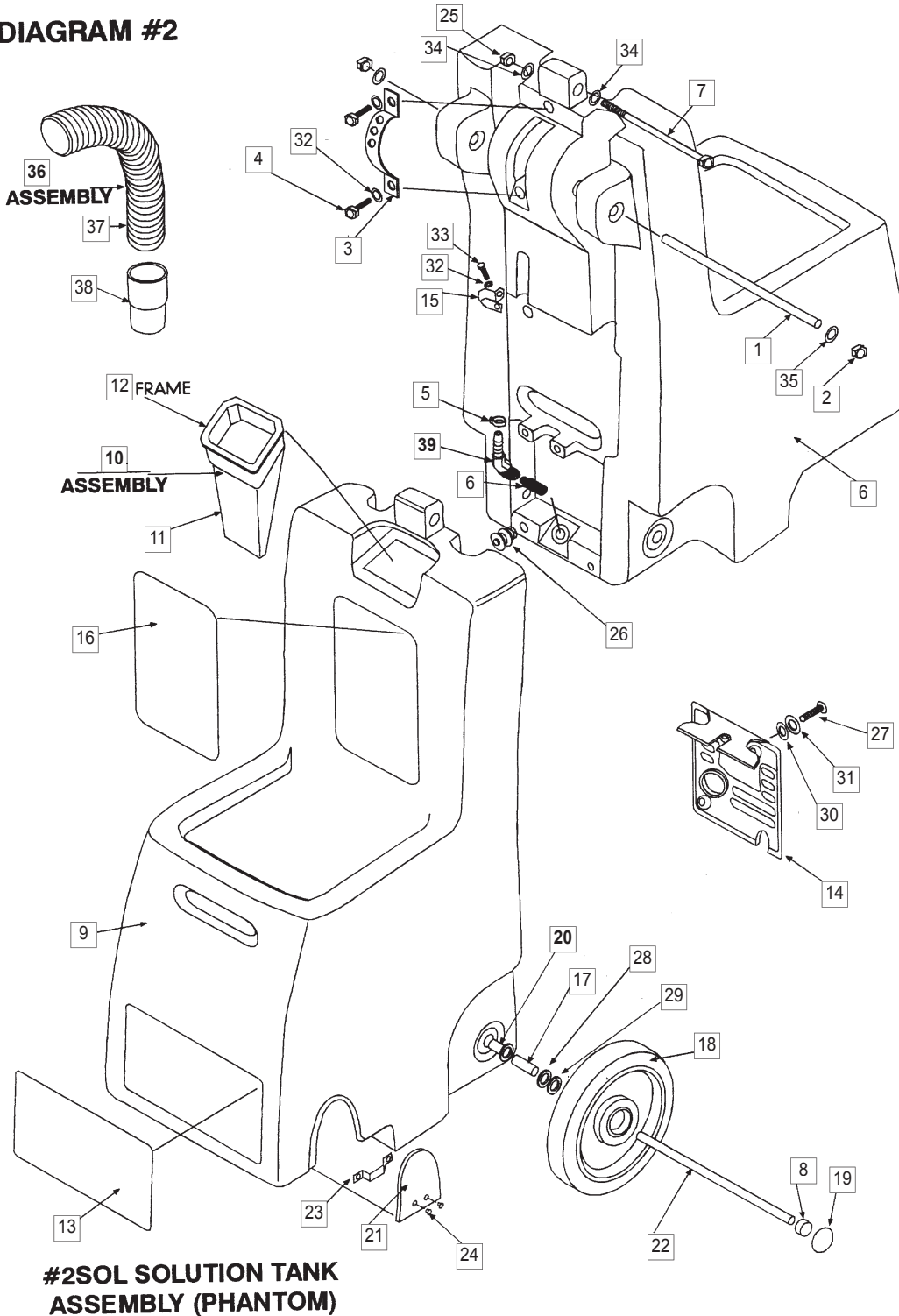
Ref#	Description	Part#	Ref#	Description	Part#
1	...Housing, Brush - aluminum Casting 10001	CX2388	35	Nut, 110-24 hex SS 10273	CX4154
2	Clip, nozzle - rear 10002	CX2390	36	Bolt, 8-32 x 5/16 phil SS 10274	CX4156
3	Bolt, 1/4 phil truss SS 10274	CX4156	37	Washer, flat #8 SS 10275	CX2508
6	Strap, motor brush 10008		38	Wire assembly, drive motor 10411 - includes:	
7	Pulley, threaded / motor 10009	CX2384	39	Wire, black - 16 gauge / 5" 10124	
9	Belt, gear 10011	CX2202	40	Butt splice / 1 EA 10147	
10	Bracket, brush 10016		41	Terminal, spade - male / 1 EA 10104	
11	Rivet, aluminum 5/32 x .240 10018		42	Motor-brush wired C4 115V assembly 18005 - incl.	CX5605
12	Gasket, 2 part brush / SW. panel 10025	CX4401	43	Motor, brush C-4 115 V / 1 EA 10007	
13	Clip, nozzle - front 10031	CX1001	44	Terminal, Ring #10 / 1 EA 10131	
14	Brass plug, 1/4" barb 10038	CX2375	45	Wire, Tie - 6" / 1 EA 10158	
15	Brass, T-barb x 1/4 x 1/4 x 1/4 10040		46	Tag, Wire B / 1 EA 10199	
16	Spray tip, brass - 1/8 MNPT 10042	CX2391	47	Wire Assembly, drive motor 10411 - includes:	
17	Clamp, 1/4 solution hose, zinc 10057		48	Wire, ground housing brush assembly 18008 - incl.:	
18	Bolt, 10-24 x 1/2 phil SS 10150	CX4143	49	Terminal, bullet female-ground / 1 EA 10107	
19	Washer, flat #6 SS 10151	CX4152	50	Wire, green - 16 gauge bulk / 14" 10126	
20	Bolt, 10-32 x 3/8 hex ground 10152		51	Terminal, ring #10 / 1 EA 10131	
21	Wire tie - 6" 10158		52	Brass, elbow 90D modified 18010	
22	Bumper, complete 10162 - includes:	CX2395	53	Brush core sub-assembly 18210 - includes:	CX2500
23	Bumper, extrusion - 25" / 1 EA 10003		54	Pulley, set screw - shaft / 1 EA 10010	CX2501
24	24" Transfer Adhesive Bulk 10412		55	Shaft, brush / 1 EA 10012	CX2507
25	Washer, flat #10 SS 10168	CX4155	56	Brush, reel / 1 EA 10013	CX2401
26	Washer, lock #10 SS 10174	CX4124	57	Washer, lock #10 SS / 2 EA 10174	CX4124
27	Threaded rod, 10-24 x 2 7/8" SS 10187		58	Bolt, 10-24 x 3/4 Hex SS / 2 EA 10182	CX4157
28	Clamp, solution hose - 1/4 SS 10188	CX2379	59	Washer, brush core / 2 EA 10183	CX2506
29	Bolt, 10-24 x 1/2 SS hex sims 10190		60	Bearing assembly 18016 - includes:	CX2510
30	Hose, solution - 90d elbow to "T" 1/4 ad x 2-3/8" 10250		61	Bearing cap / 1 EA 10014	CX2502
31	Hose, solution - plug to "T" 1/4" ID x 20" 10251		62	Washer, bearing cover / 1 EA 10015	CX2505
32	Hose, vac nozzle to disconnect - includes:		63	Bearing, ball SS / 1 EA 10017	FA5301
33	Hose, vac nozzle to disconnect - 20 1/2" 10255	CX4602	64	Bearing block / 1 EA 10195	CX2503
34	Cuff, hose - female black / 1 EA 10070	CX4905			

Items shown without part numbers may be special ordered. (approximately 3-4 weeks delivery)



Model C4 - Diagram #2

DIAGRAM #2





Model C4 - Diagram #2

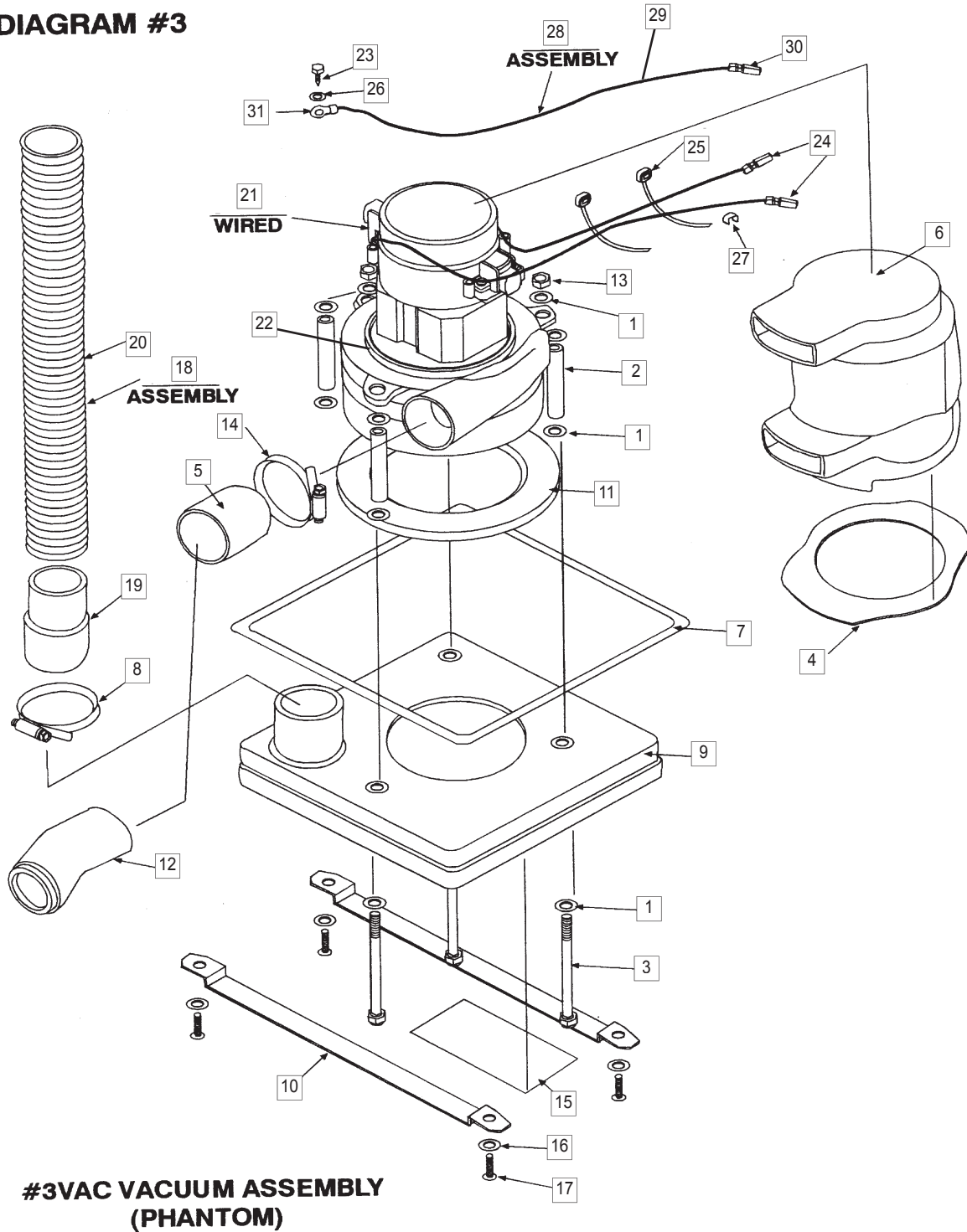
Ref#	Description	Part#	Ref#	Description	Part#
1	Stud, handle mount - 3/8 aluminum	10023	22	Shaft, wheel SS	10102
2	Nut, 3/8 - 16 nylon lock	10024	23	Bracket, cover - belt drive	10127 CX2398
3	Bracket, detent - handle adjust	10027	24	Clip kit cover	16007 CX4159
4	Bolt, 1/4-20 x 3/4 HEX SS	10035	25	Nut, 1/4-20 nylcok SS	10137
5	Clamp, 5/16" solution hose - zinc	10043	26	Valve, drain	10143 CX2385
6	Filter, S tank to pump	10044	27	Bolt, 10-24 x 1/2 phil SS	10150 CX4153
7	Bolt, 1/4-20 x 3" Hex SS	10047	28	Nylon spacer, wheel - thin	10156 CX7105
8	Axle cap, shaft	10067 CX7107	29	Nylon spacer, wheel - thick	10157 CX7106
9	Solution tank, blue	10089 CX2377	30	Washer, flat #10 SS	10168 CX4155
10	Filter, bag solution tank-assembly	10090 CX2383	31	Washer, lock #10 SS	10174 CX4124
11	Filter, bag without frame / 1 EA	10095	32	Washer, lock 1/4"	10176
12	Frame, filter bag (C-4) / 1 EA	10090 CX2383	33	Bolt, 1/4-20 x 5/8 phil SS	10178 CX4119
13	Label, carpet express logo	10091 CX2381	34	Washer, .390 x .625 x .031 SS	10180
14	Door, blue	10092	35	Washer, .390 x .750 x .020 SS	10181
15	Clamp, loop cushioned - 3/8"	10093	36	Hose vac-lid to disconnect with cuff	18208
16	Label, " note: Pour Here"	10094	37	Hose, vac-lid to discont. 13 1/2" / 1 EA	10197 CX4601
17	Spacer, wheel	10096 CX7104	38	Cuff, hose-male, gray / 1 EA	10075 CX4906
18	Wheel, 7" x 1.5" - gray hub	10097 CX7109	39	Brass elbow 45 D modified	18211
19	Hub cap, wheel - black	10098 CX7110		Hose kit, drain 16005 (not illustrated)	CX2340
20	Brass eyelet	10099 CX7108			
21	Cover, belt drive	10099 CX7108			

Items shown without part numbers may be special ordered. (approximately 3-4 weeks delivery)



Model C4 - Diagram #3

DIAGRAM #3





Model C4 - Diagram #3

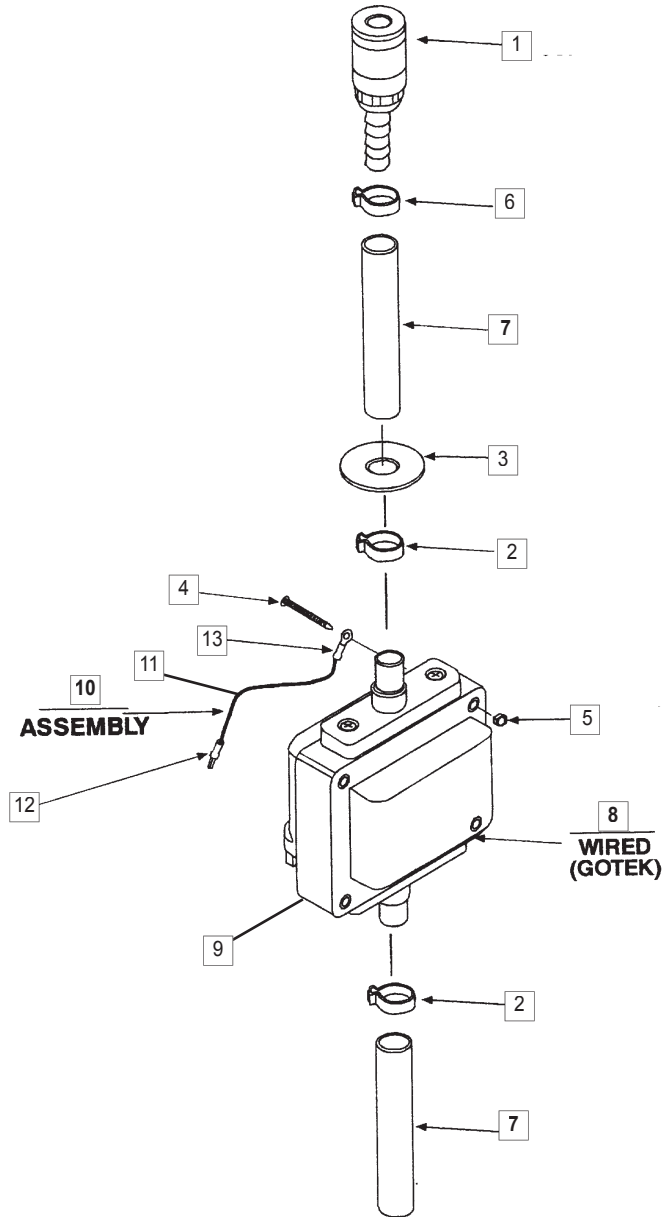
Ref#	Description	Part#
1	Washer, flat 1/4" SS 10061	
2	Standoff, vac motor - aluminum 10062	
3	Bolt, 1/4-20 x 3-3/4" HEX SS 10063	
4	Air separator, motor cover 10064	
5	Rubber band 10065	CX2336
6	Motor cover, vacuum 10066	CX2386
7	"O" Ring, duct - 7-5/8" x 3/16" 10068	
8	Clamp, gear - 1-3/4" SS 10071	
9	Duct, vacuum 10073	
10	Strap, duct 10076	
11	Gasket, 2 piece lid & duct 10081	CX2382
12	Exhaust tube 10101	
13	Nut, 1/4-20 nylon - lock SS 10137	
14	Clamp, gear 2" SS 10154	
15	Label, caution - duct 10172	
16	Washer, lock 1/4" 10176	
17	Bolt, 1/4-20 x 5/8" PHIL SS 10178	CX4119
18	Hose, vacuum dust to lid w/cuff assembly 10258 - includes:	
19	Cuff, vac - vac duct - white 10077	
20	Hose, vac duct to lid, 25 1/2" / 1 EA 10198	CX4603
21	Motor, vacuum wired C-4 115V assembly 18007 - includes:	
22	Motor, vacuum C-4 115v / 1 EA 10074	LB5875
23	Screw, #10 self tap - green 10088	
24	Terminal, spade - male 10104	
25	Tie, wire - 6" zip tie / 2 EA 10158	
26	Washer, lock #10 SS / 1 EA 10174	CX4124
27	Tag, wire V / 1 EA 10194	
28	Ground wire-motor, vac assembly 18011 - includes:	
29	Wire, gauge green - 14" long 10126	
30	Terminal, bullet - male ground / 1 EA 10106	
31	Terminal, ring-#10 / 1 EA 10131	

Items shown without part numbers may be special ordered. (approximately 3-4 weeks delivery)



Model C4 - Diagram #4

DIAGRAM #4



#4PUM PUMP ASSEMBLY
(STANDARD)



Model C4 - Diagram #4

Ref#	Description	Part#
1	Brass coupler, 5/16 barbed - automotive 10037	CX2376
2	Clamp, 5/16 solution hose - zinc 10043	
3	Washer, 1.38 x .525 x .062 - nylon 10046	
4	Bolt, 4-40 x 1" PHIL SS 10132	
5	Nut, 4-40 nylon lock SS 10133.....	
6	Clamp, 5/16 S solution hose SS 10146.....	CX2387
7	Hose, solution - inlet to pump, 2" 10252.....	CX4612
8	Pump wired C4 assembly 18006 includes:.....	CX5804
9	Motor pump C-4, 120 volt - gotec / 1 EA 10048.....	
4	Bolt, 4-40 x 1" PHIL SS 10132	
5	Nut, 4-40 nylon lock SS 10133.....	
10	Ground wire pump assembly 18012 includes:.....	
11	Terminal, ring - #4 / 1 EA 10105	
12	Terminal, bullet - male ground / 1 EA 10106	
13	Wire, 16 gauge green - 4" long 10126.....	
14	Pump assembly / complete - includes entire..... diagram (assembled)	

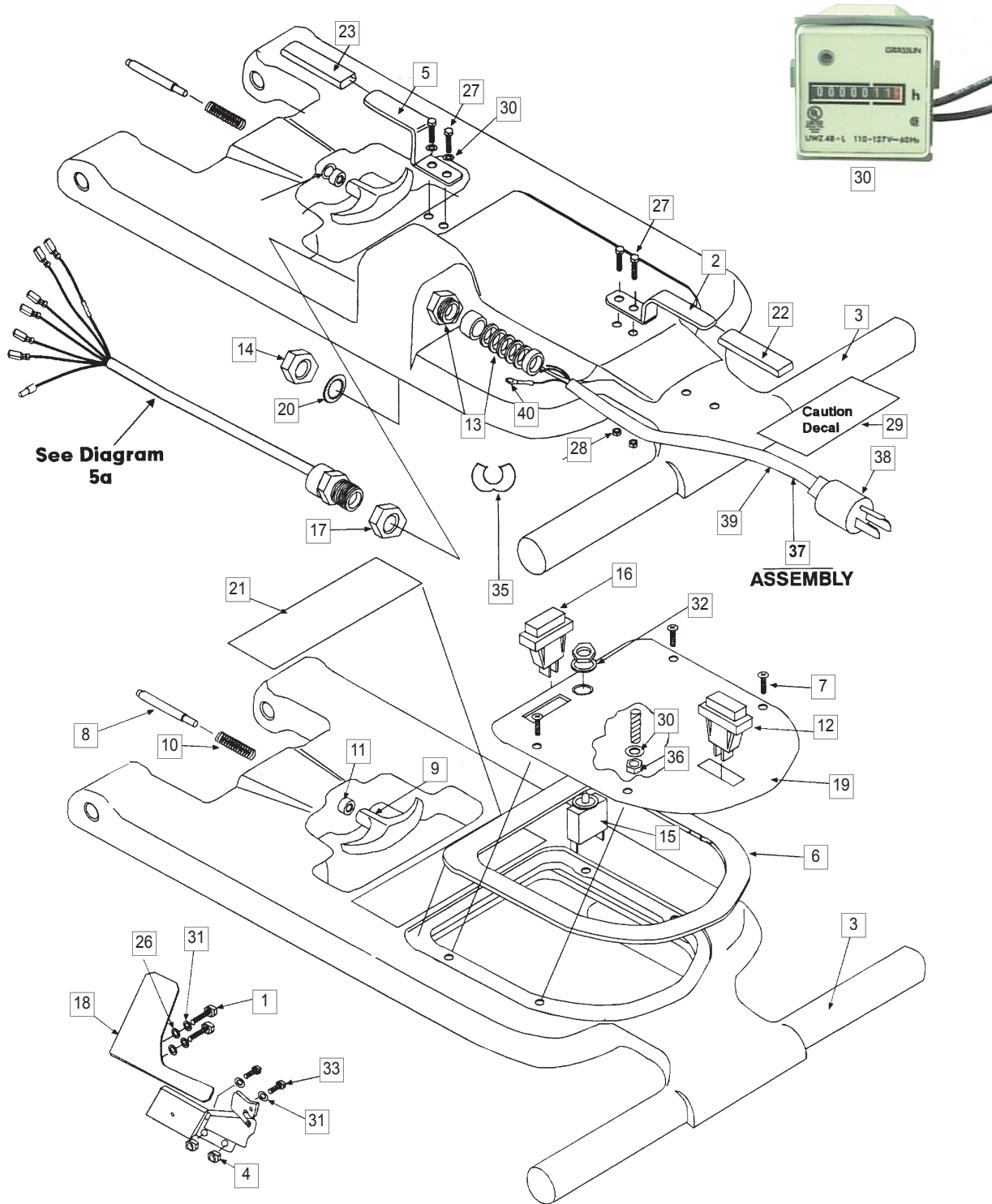
Items shown without part numbers may be special ordered. (approximately 3-4 weeks delivery)

**You can contact us by Email:
sales@ttoparts.ca**



Model C4 - Diagram #5

DIAGRAM #5



#5HAN HANDLE ASSEMBLY (STANDARD)



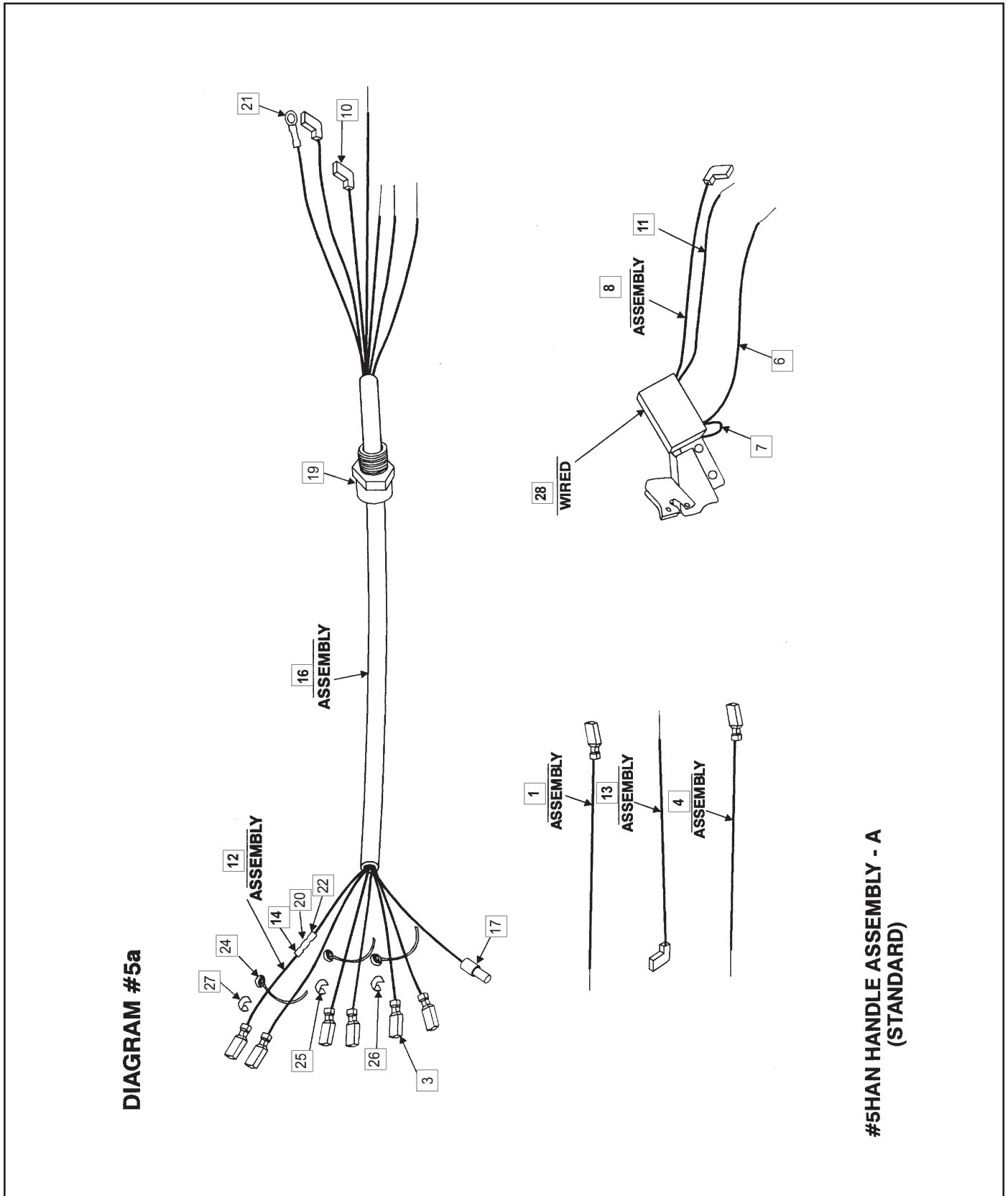
Model C4 - Diagram #5

Ref#	Description	Part#	Ref#	Description	Part#
1	Bolt, 8-32 x 3/4 HEX SS 2037.....	CX4126	22	Cord protector, upper 3-3/4" 10141	
2	Bracket, cord wrap - upper 10019.....		23	Cord protector, lower 2-3/4" 10142	
3	Handle, machine - gray 10020		24	Crimp nut 10149	
4	Nut, 8-32 HEX SS 10021		25	Wire, tie - 6" 10158.....	
5	Bracket, cord wrap - lower with PEM 10022		26	Washer, #8 flat SS 10164	
6	Gasket, panel 10025	CX4401	27	Screw, 10-24 x 5/8" SS 10165.....	
7	Screw, 6-32 x 3/8 phil. flat SS 10026.....		28	Locknut, 10-24 - nylon SS 10166	
8	Shaft, detent - handle plunger 10028		29	Decal, "Caution" 10171.....	
9	Handle, "T" - detent 10029		30	Washer, lock #10 SS 10174.....	CX4124
10	Spring, handle adjust 10030.....		31	Washer, #8 int. tooth lock SS 10175	
11	Spacer, nylon - handle adjust 10033		32	Washer, .390 x .625 x .031 SS 10180.....	
12	Switch, rocker 10108	CX6604	33	Bolt, 8-32 x 3/8" ind. HEX SS 10189.....	
13	Strain relief, power cord 10111		34	Power cord clip 10191	
14	Nut, power cord, strain relief 10112		35	Crimp, strain relief - power cord 10192...	
15	Circuit breaker 10113	CX6605	36	Nut, 10-32 green 10193.....	
16	Cap, switch - rocker single poll 10114.....	CX2392	37	Cord, power assembly handle 18205	CX3701
17	Nut, strain relief cable 10115		38	Plug, power cord / 1 EA 10109	
18	Bracket, switch mount 10117.....	CX2335	39	Power cord / bulk (not for sale) 10110.....	
19	Control panel, cover - 120 Volt 10118		40	Terminal, ring - #10 / 1 EA 10131	
20	Lockwasher int. tooth, 3/4" 10123		29	Warning decal, power cord / 1 EA 10171 .	
21	Label, handle adjustment 10130		41	Hour meter 10423	CX2396

Items shown without part numbers may be special ordered. (approximately 3-4 weeks delivery)



Model C4 - Diagram #5A





Model C4 - Diagram #5A

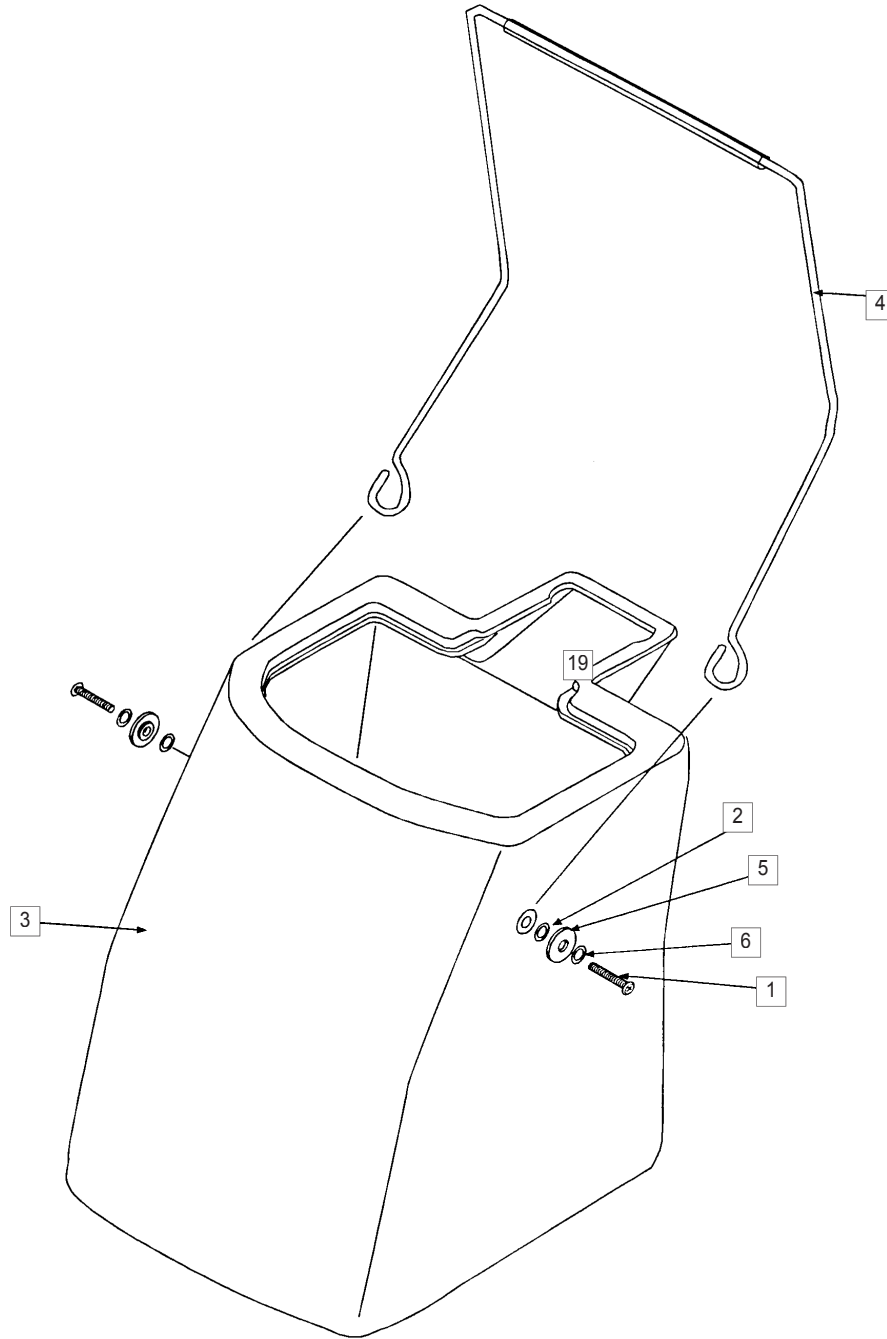
Ref#	Description	Part#	Ref#	Description	Part#
1	Wire, black 8" Fml conn. hand tool switch to crimp nut 10403 -incl:		3	Terminal, spade female - 18 gauge / 6 EA 10119.....	
2	Wire, black - 16 Gauge Bulk / 8" 10124.....		19	Strain relief, cable - wire 8 / 1 EA 10121.....	
3	Terminal, spade female - 18 gauge / 1 EA 10119.....		20	Diode / 1 EA 10122 (kit #16003).....	CX2334
4	Wire, brown 8" Fml conn. hand tool switch to crimp nut 10404-incl:		21	Terminal, ring - #10 / 1 EA 10131.....	
5	Wire, brown - 16 gauge bulk / 8" 10129.....		22	Parallel, splice - uninsulated / 2 EA 10135.....	
3	Terminal, spade female - 18 gauge bulk / 1 EA 10119.....		23	Heat shrink 2" cover for diode (8 wire cable) 10420.....	
6	Wire, black 10" trigger switch to Crimp Nut 10405 -incl:		15	Terminal, spade - male / 2 EA 10104.....	
7	Wire, black 2" solder hand tool trigger / 1 EA 10406 -incl:		10	Connector, flag / 2 EA 10148.....	
2	Wire, black - 16 gauge bulk / 2" 10124.....		24	Wire, tie - 6" / 3 EA 10158.....	
8	Wire, red 10" conn. flag circuit brkr to trgr. stch 10407 -incl:		25	Tag, wire V / 1 EA 10194.....	
9	Wire, red - 16 gauge bulk / 10" 10128.....		26	Tag, wire B / 1 EA 10199.....	
10	Connector, flag / 1 EA 10148.....		27	Tag, wire P / 1 EA 17099.....	
11	Wire, brown 10" trigger switch to crimp nut 10408 -incl:		12	Wire, black 4" connector female pump to diode 10409 -incl:	
5	Wire, brown - 16 gauge bulk / 10" 10129.....		2	Wire, black - 16 gauge bulk / 10" 10124.....	
12	Wire, black 4" connector female pump to diode 10409 -incl:		28	Switch trigger wired assembly handle 18207 -incl:.....	
2	Wire, black - 16 gauge bulk / 10" 10124.....		29	Switch, trigger / 1 EA 10120.....	CX6606
13	Wire, black 8" conn. flag suction switch to crimp nut 10410 -incl:		8	Wire, red 10" conn. flag circuit brkr to trgr. stch 10407 - incl:	
2	Wire, black - 16 gauge bulk / 10" 10124.....		9	Wire, red - 16 gauge bulk / 10" 10128.....	
10	Connector, flag / 1 EA 10148.....		10	Connector, flag / 1 EA 10148.....	
14	Heat shrink 2" cover for diode (8 wire cable) 10420.....		11	Wire, brown 10" trigger switch to crimp nut 10408 - incl:	
15	Terminal, spade - male / 2 EA 10104.....		5	Wire, brown - 16 gauge bulk / 10" 10129.....	
16	Cable (8 wire) assembly handle to motors 18206.....		6	Wire, black 10" trigger switch to crimp nut 10405 - incl: .	
17	Terminal, bullet male - ground / 1 EA 10106.....		7	Wire, black 2" solder hand tool trigger / 1 EA 10406.....	
18	Cable, 8 wire / bulk (not for sale) 10116.....		2	Wire, black - 16 gauge bulk / 2" 10124.....	
			30	Handle assembly / complete incl. entire diagram (assembled) 5HAN	

Items shown without part numbers may be special ordered. (approximately 3-4 weeks delivery)



Model C4 - Diagram #6

DIAGRAM #6



#06BU Bucket Assembly
(PHANTOM)



Model C4 - Diagram #6

Ref#	Description	Part#
1	Bolt, 1/4-20 x 3/4 PHIL SS 10039	
2	Washer, flat 1/4" SS 10061	
3	Bucket, blue 10085	
4	Handle, bucket bail - C4 10086	CX4503
5	Bushing, flanged - bucket 10087	
6	Washer, lock 1/4" 10176	

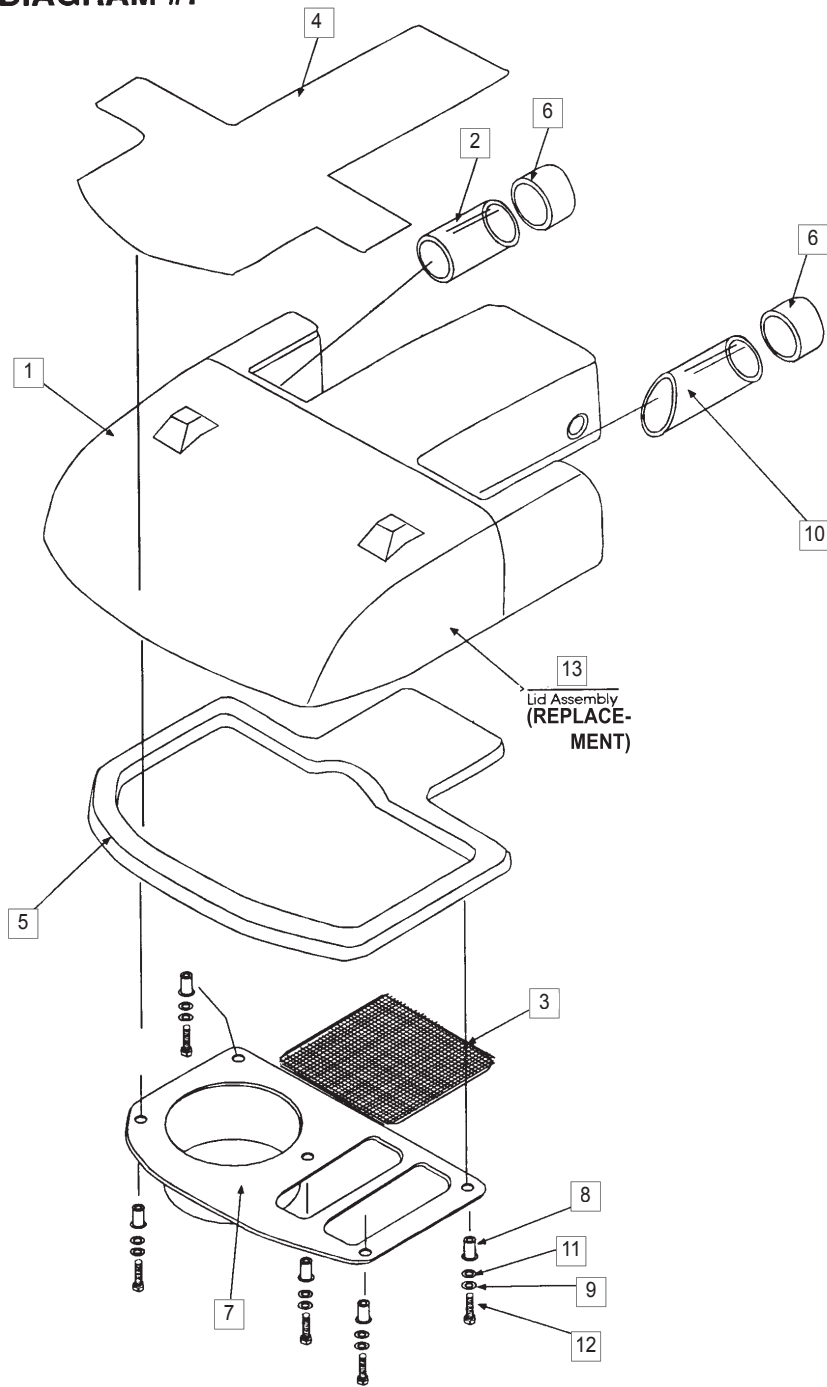
Items shown without part numbers may be special ordered. (approximately 3-4 weeks delivery)

For a full selection of Carpet Express Cleaning Products see section #35.



Model C4 - Diagram #7

DIAGRAM #7



14 Lid Assembly complete (STANDARD)



Model C4 - Diagram #7

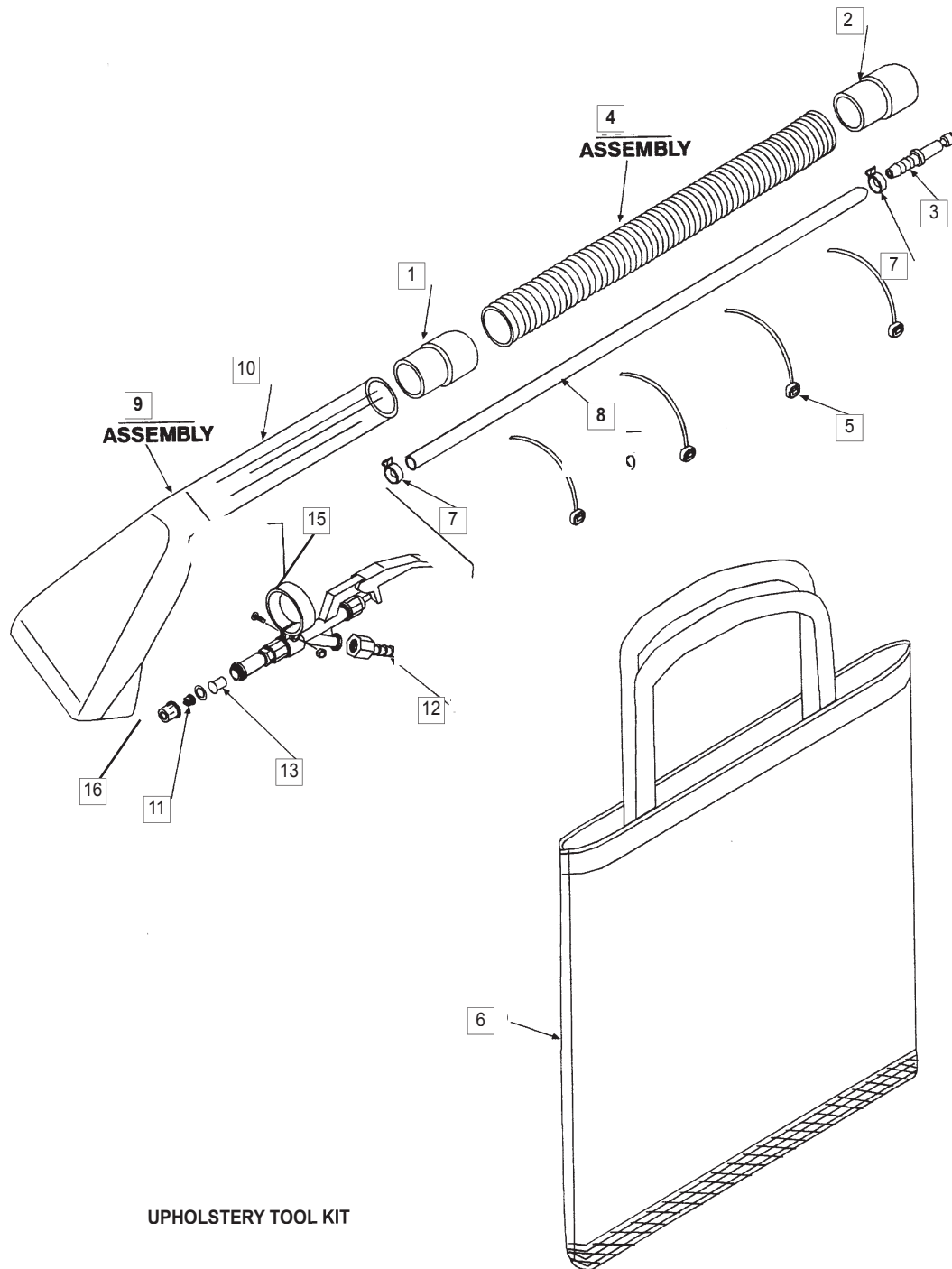
Ref#	Description	Part#
1	Lid, gray 10060.....	CX2389
2	Tube, sight - 3.12 long 10078.....	CX2380
3	Filter, lid 10079.....	CX2399
4	Label, instructions - lid 10080.....	CX2393
5	Gasket, 2 piece lid & duct 10081.....	CX2382
6	Cuff, vac lid 10082.....	CX4904
7	Lid plate 10170.....	
8	Nut, well - 10-32 10173.....	CX4158
9	Washer, lock #10 SS 10174.....	CX4124
10	Tube, sight - 45D 10177.....	CX4605
11	Washer, flat #10 SS 10185.....	
12	Bolt, 10-32 x 1" HEX SS 10186.....	
13	Lid Assembly / upper lid 18001 - includes: (assembled).....	
1	Lid, gray 10060.....	CX2389
2	Tube, sight - 3.12 Long 10078.....	CX2380
4	Label, instructions - Lid 10080.....	
5	Gasket, 2 piece lid & duct 10081.....	CX2382
6	Cuff, vac lid 10082.....	CX4904
10	Tube, sight - 45D 10177.....	
14	Lid assembly / complete 7LID - incl: entire diag. (assembled).....	

Items shown without part numbers may be special ordered. (approximately 3-4 weeks delivery)



Model C4 - Diagram #8

DIAGRAM #8





Model C4 - Diagram #8

Ref#	Description	Part#
1	Cuff, hose 1" - straight 4088.....	CX4902
2	Cuff, hose adapter - 1" - 1 1/4" 4089.....	CX4903
3	Brass, plug - 1/4" barb 10038.....	CX2375
4	Hose vac, hand tool 1" x 10' with cuffs 10053 - includes:.....	CX4604
1	Cuff, hose 1" - straight 4088.....	CX4902
2	Cuff, hose adapter - 1" - 1 1/4" 4089.....	CX4903
5	Wire tie, 11" - zip tie 10058.....	
6	Bag, hand tool - gray 10059.....	CX6301
7	Clamp, solution hose - 1/4 SS 10188.....	CX2379
8	Hose, solution - hand tool 1/4" ID x 138" 10196.....	CX4610
9	Hand tool assembled 18209 - includes:.....	CX4303
10	Hand tool, standard plastic 10049.....	CX4308
11	Spray tip, hand tool 10050.....	
12	1/4" Barb, 1/4" pipe thread - nylon 10051.....	CX2378
13	Filter, hand tool - in line 10138.....	
14	Trigger valve assembly 18214.....	CX4304
15	Clamp for trigger assembly 18216.....	CX4305
16	Spray tip cap.....	CX2394
17	Upholstery tool kit 10301 - includes tool & hose.....	CX4302

Items shown without part numbers may be special ordered. (approximately 3-4 weeks delivery)



NOTES:
